

KLF4 Rabbit pAb

Catalog No.: A28513

Basic Information

Observed MW

50-65 kDa

Calculated MW

52 kDa

Category

Primary antibody

Applications

WB,IHC-P,ELISA

Cross-Reactivity

Human, Mouse, Rat

Background

Enables several functions, including DNA binding activity; DNA-binding transcription activator activity, RNA polymerase II-specific; and RNA polymerase II sequence-specific DNA-binding transcription factor recruiting activity. Involved in several processes, including canonical Wnt signaling pathway; establishment of skin barrier; and fat cell differentiation. Acts upstream of or within several processes, including cellular response to leukemia inhibitory factor; regulation of DNA-templated transcription; and regulation of blastocyst development. Located in cytoplasm; euchromatin; and nucleus. Part of transcription regulator complex. Is expressed in several structures, including alimentary system; early conceptus; genitourinary system; limb; and skin. Human ortholog(s) of this gene implicated in hepatocellular carcinoma. Orthologous to human KLF4 (KLF transcription factor 4).

Recommended Dilutions

WB 1:1000 - 1:6000

IHC-P 1:400 - 1:1600

ELISA Recommended starting concentration is 1 µg/mL. Please optimize the concentration based on your specific assay requirements. For high-ratio antibody dilutions (≥1:10000) a sequential dilution method is strongly recommended to ensure measurement accuracy.

Immunogen Information

Gene ID

16600

Swiss Prot

Q60793

Immunogen

Recombinant protein (or fragment). This information is considered to be commercially sensitive.

Synonyms

EZF; Zie; Gklf

Product Information

Source

Rabbit

Isotype

IgG

Purification

Affinity purification

Storage

Store at -20°C. Avoid freeze / thaw cycles.

Buffer: PBS with 0.09% Sodium azide, 50% glycerol, pH7.3.

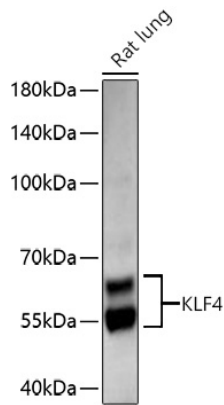
Contact

☎ | 400-999-6126

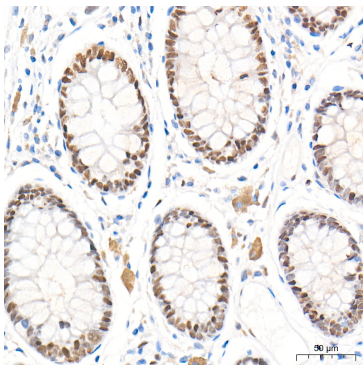
✉ | cn.market@abclonal.com.cn

🌐 | www.abclonal.com.cn

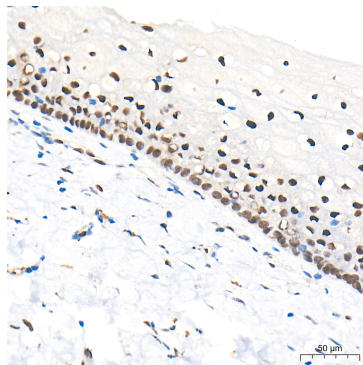
Validation Data



Western blot analysis of lysates from Rat lung using KLF4 Rabbit pAb (A28513) at 1:3000 dilution incubated at room temperature for 1.5 hours.
Secondary antibody: HRP-conjugated Goat anti-Rabbit IgG (H+L) (AS014) at 1:10000 dilution.
Lysates/proteins: 25 µg per lane.
Blocking buffer: 3% nonfat dry milk in TBST.
Detection: ECL Basic Kit (RM00020).
Exposure time: 90 s.



Immunohistochemistry analysis of paraffin-embedded Human colon tissue using KLF4 Rabbit pAb (A28513) at a dilution of 1:800 (40x lens). High pressure antigen retrieval performed with 0.01M Tris-EDTA Buffer (pH 9.0) prior to IHC staining.



Immunohistochemistry analysis of paraffin-embedded Human esophagus tissue using KLF4 Rabbit pAb (A28513) at a dilution of 1:800 (40x lens). High pressure antigen retrieval performed with 0.01M Tris-EDTA Buffer (pH 9.0) prior to IHC staining.