

# Fibronectin Rabbit mAb

Catalog No.: A28529 **Recombinant**

## Basic Information

### Observed MW

300 kDa

### Calculated MW

72 kDa/74 kDa/221-272 kDa

### Category

Primary antibody

### Applications

WB,IP,IF/ICC,IHC-P,ELISA

### Cross-Reactivity

Human

### CloneNo number

ARC78866

## Background

This gene encodes fibronectin, a glycoprotein present in a soluble dimeric form in plasma, and in a dimeric or multimeric form at the cell surface and in extracellular matrix. The encoded preproprotein is proteolytically processed to generate the mature protein. Fibronectin is involved in cell adhesion and migration processes including embryogenesis, wound healing, blood coagulation, host defense, and metastasis. The gene has three regions subject to alternative splicing, with the potential to produce 20 different transcript variants, at least one of which encodes an isoform that undergoes proteolytic processing. The full-length nature of some variants has not been determined.

## Recommended Dilutions

**WB** 1:4000-1:30000

**IP** 0.5 µg-4 µg antibody for  
200 µg-400 µg extracts  
of whole cells

**IF/ICC1:200-  
1:2000  
IHC-P** 1:500 - 1:2000

**ELISA** Recommended starting concentration is 1 µg/mL. Please optimize the concentration based on your specific assay requirements. For high-ratio antibody dilutions ( $\geq 1:10000$ ) a sequential dilution method is strongly recommended to ensure measurement accuracy.

## Immunogen Information

### Gene ID

2335

### Swiss Prot

P02751

### Immunogen

Recombinant protein (or fragment). This information is considered to be commercially sensitive.

### Synonyms

FN; CIG; FNZ; MSF; ED-B; FINC; GFND; LETS; GFND2; SMDCF

## Product Information

### Source

Rabbit

### Isotype

IgG

### Purification

Affinity purification

### Storage

Store at -20°C. Avoid freeze / thaw cycles.

Buffer: PBS with 0.09% Sodium azide, 0.05% BSA, 50% glycerol, pH7.3.

## Contact

---

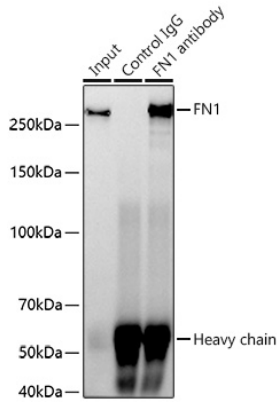
 | 400-999-6126

 | [cn.market@abclonal.com.cn](mailto:cn.market@abclonal.com.cn)

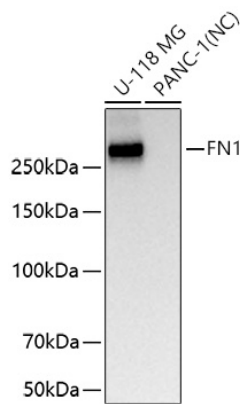
 | [www.abclonal.com.cn](http://www.abclonal.com.cn)

---

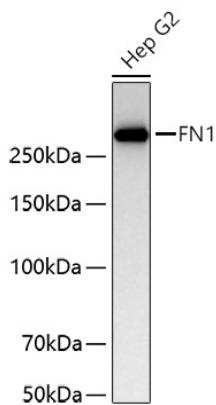
## Validation Data



Immunoprecipitation of FN1 from 300 µg extracts of Hep G2 cells was performed using 2 µg of FN1 Rabbit mAb (A28529). Rabbit Control IgG (AC005) was used to precipitate the Control IgG sample. IP samples were eluted with 1x Laemmli Buffer. The Input lane represents 10% of the total input. Western blot analysis of immunoprecipitates was conducted using FN1 Rabbit mAb (A28529) at a dilution of 1:5000.

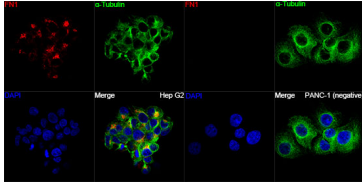


Western blot analysis of various lysates using FN1 Rabbit mAb (A28529) at 1:10000 dilution incubated overnight at 4°C.  
Secondary antibody: HRP-conjugated Goat anti-Rabbit IgG (H+L) (AS014) at 1:10000 dilution.  
Lysates/proteins: 25 µg per lane.  
Blocking buffer: 3% nonfat dry milk in TBST.  
Detection: ECL Basic Kit (RM00020).  
Negative control (NC): PANC-1.  
Exposure time: 1 s.

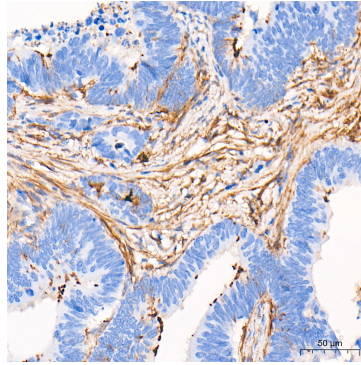


Western blot analysis of lysates from Hep G2 cells using FN1 Rabbit mAb (A28529) at 1:10000 dilution incubated overnight at 4°C.  
Secondary antibody: HRP-conjugated Goat anti-Rabbit IgG (H+L) (AS014) at 1:10000 dilution.  
Lysates/proteins: 25 µg per lane.  
Blocking buffer: 3% nonfat dry milk in TBST.  
Detection: ECL Basic Kit (RM00020).  
Exposure time: 30 s.

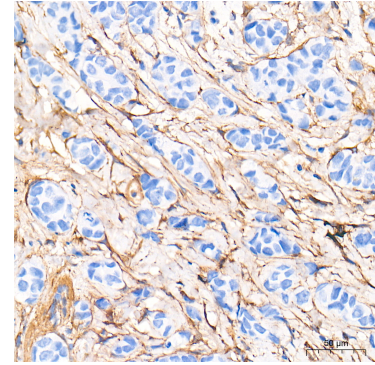
## Validation Data



Confocal imaging of Hep G2 cells and PANC-1 cells (negative) using FN1 Rabbit mAb (A28529, dilution 1:2000) followed by a further incubation with Cy3-conjugated Goat anti-Rabbit IgG (H+L) (AS007, dilution 1:500) (Red). The cells were counterstained with  $\alpha$ -Tubulin Mouse mAb (AC012, dilution 1:400) followed by incubation with ABflo® 488-conjugated Goat Anti-Mouse IgG (H+L) Ab (AS076, dilution 1:500) (Green). DAPI was used for nuclear staining (Blue). Objective: 100x.



Immunohistochemistry analysis of paraffin-embedded Human colon carcinoma tissue using FN1 Rabbit mAb (A28529) at a dilution of 1:1000 (40x lens). High pressure antigen retrieval performed with 0.01M Tris-EDTA Buffer (pH 9.0) prior to IHC staining.



Immunohistochemistry analysis of paraffin-embedded Human breast cancer tissue using FN1 Rabbit mAb (A28529) at a dilution of 1:1000 (40x lens). High pressure antigen retrieval performed with 0.01M Tris-EDTA Buffer (pH 9.0) prior to IHC staining.