

ICAM-1/CD54 Mouse mAb

Catalog No.: A28538

Basic Information

Observed MW

80-100 kDa

Calculated MW

59 kDa

Category

Primary antibody

Applications

WB,IF-P,IHC-P,ELISA

Cross-Reactivity

Mouse, Rat

CloneNo number

AMC50103

Background

This gene encodes an integral membrane protein that binds leukocyte adhesion protein LFA-1. It participates in the innate immune response.

Recommended Dilutions

WB 1:3000 - 1:20000

IF-P 1:100 - 1:200

IHC-P 1:500 - 1:2000

ELISA Recommended starting concentration is 1 µg/mL. Please optimize the concentration based on your specific assay requirements. For high-ratio antibody dilutions (≥1:10000) a sequential dilution method is strongly recommended to ensure measurement accuracy.

Immunogen Information

Gene ID

15894

Swiss Prot

P13597

Immunogen

Recombinant protein (or fragment). This information is considered to be commercially sensitive.

Synonyms

CD54; Ly-47; Icam-1; MALA-2

Product Information

Source

Mouse

Isotype

IgG1. Rabbit-derived mouse chimeric antibody

Purification

Affinity purification

Storage

Store at -20°C. Avoid freeze / thaw cycles.

Buffer: PBS with 0.09% sodium azide, 50% glycerol, pH7.3

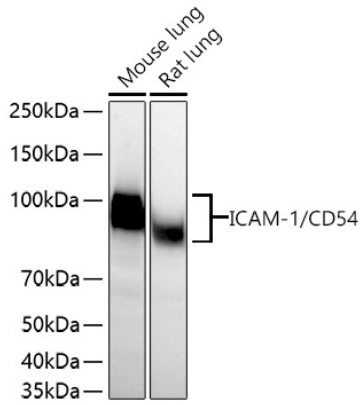
Contact

 | 400-999-6126

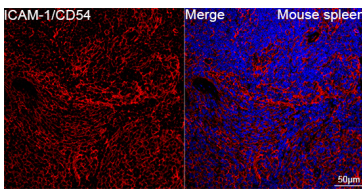
 | cn.market@abclonal.com.cn

 | www.abclonal.com.cn

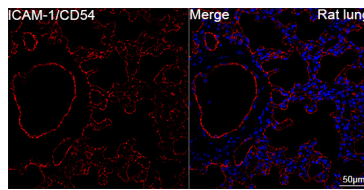
Validation Data



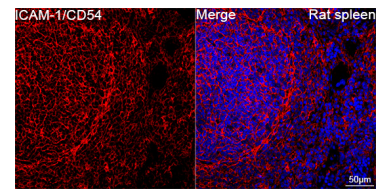
Western blot analysis of various lysates using ICAM-1/CD54 Mouse mAb (A28538) at 1:5000 dilution incubated overnight at 4°C.
 Secondary antibody: HRP-conjugated Goat anti-Mouse IgG (H+L) (AS003) at 1:10000 dilution.
 Lysates/proteins: 25 µg per lane.
 Blocking buffer: 3% nonfat dry milk in TBST.
 Detection: ECL Basic Kit (RM00020).
 Exposure time: 20 s.



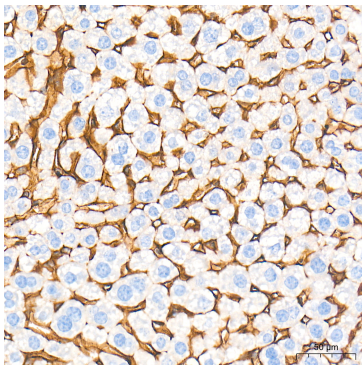
Confocal imaging of paraffin-embedded Mouse spleen tissue using ICAM-1/CD54 Mouse mAb (A28538, dilution 1:200) followed by a further incubation with Cy3-conjugated Goat anti-Mouse IgG (H+L) (AS008, dilution 1:500) (Red). DAPI was used for nuclear staining (Blue). High pressure antigen retrieval performed with 0.01M Citrate Buffer (pH 6.0) prior to IF staining. Objective: 40x.



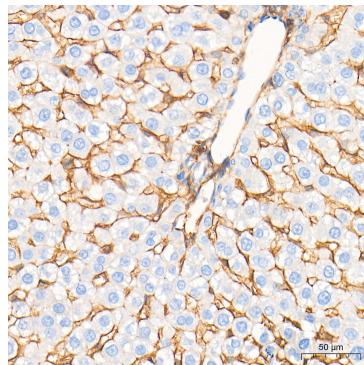
Confocal imaging of paraffin-embedded Rat lung tissue using ICAM-1/CD54 Mouse mAb (A28538, dilution 1:200) followed by a further incubation with Cy3-conjugated Goat anti-Mouse IgG (H+L) (AS008, dilution 1:500) (Red). DAPI was used for nuclear staining (Blue). High pressure antigen retrieval performed with 0.01M Citrate Buffer (pH 6.0) prior to IF staining. Objective: 40x.



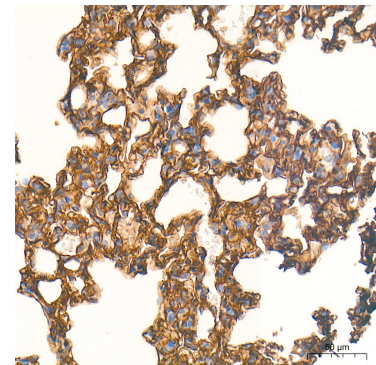
Confocal imaging of paraffin-embedded Rat spleen tissue using ICAM-1/CD54 Mouse mAb (A28538, dilution 1:200) followed by a further incubation with Cy3-conjugated Goat anti-Mouse IgG (H+L) (AS008, dilution 1:500) (Red). DAPI was used for nuclear staining (Blue). High pressure antigen retrieval performed with 0.01M Citrate Buffer (pH 6.0) prior to IF staining. Objective: 40x.



Immunohistochemistry analysis of paraffin-embedded Mouse liver tissue using ICAM-1/CD54 Mouse mAb (A28538) at a dilution of 1:500 (40x lens). High pressure antigen retrieval performed with 0.01M Tris-EDTA Buffer (pH 9.0) prior to IHC staining.



Immunohistochemistry analysis of paraffin-embedded Rat liver tissue using ICAM-1/CD54 Mouse mAb (A28538) at a dilution of 1:500 (40x lens). High pressure antigen retrieval performed with 0.01M Tris-EDTA Buffer (pH 9.0) prior to IHC staining.



Immunohistochemistry analysis of paraffin-embedded Rat lung tissue using ICAM-1/CD54 Mouse mAb (A28538) at a dilution of 1:500 (40x lens). High pressure antigen retrieval performed with 0.01M Tris-EDTA Buffer (pH 9.0) prior to IHC staining.