

ANPEP/CD13 Mouse mAb

Catalog No.: A28548

Basic Information

Observed MW

160 kDa

Calculated MW

110 kDa

Category

Primary antibody

Applications

WB,IF-P,IHC-P,ELISA

Cross-Reactivity

Human, Mouse, Rat

CloneNo number

AMC50108

Background

Enables metallopeptidase activity. Involved in angiotensin maturation. Is active in external side of plasma membrane. Is expressed in several structures, including alimentary system; brain; genitourinary system; liver; and sensory organ. Orthologous to human ANPEP (alanyl aminopeptidase, membrane).

Recommended Dilutions

WB 1:6000 - 1:20000

IF-P 1:200 - 1:800

IHC-P 1:1500 - 1:6000

ELISA Recommended starting concentration is 1 µg/mL. Please optimize the concentration based on your specific assay requirements. Please optimize the concentration based on your specific assay requirements. Please optimize the concentration based on your specific assay requirements. For high-ratio antibody dilutions (≥1:10000) a sequential dilution method is strongly recommended to ensure measurement

Immunogen Information

Gene ID

16790

Swiss Prot

P97449

Immunogen

Recombinant protein (or fragment). This information is considered to be commercially sensitive.

Synonyms

Apn; AP-M; AP-N; Cd13; P150; CD13

Product Information

Source

Mouse

Isotype

IgG1. Rabbit-derived mouse chimeric antibody

Purification

Affinity purification

Storage

Store at -20°C. Avoid freeze / thaw cycles. PBS with 0.09% sodium azide, 50% glycerol, pH7.3

accuracy.

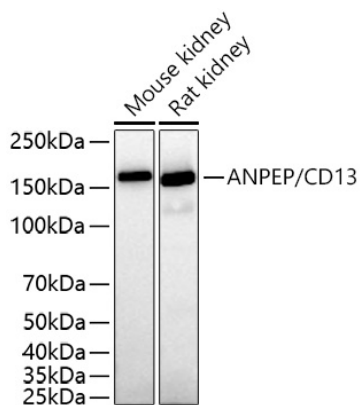
Contact

 | 400-999-6126

 | cn.market@abclonal.com.cn

 | www.abclonal.com.cn

Validation Data



Western blot analysis of various lysates using ANPEP/CD13 Mouse mAb (A28548) at 1:10000 dilution incubated overnight at 4°C.

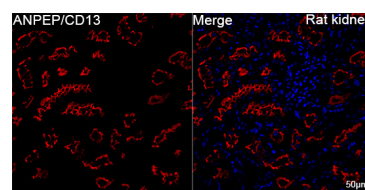
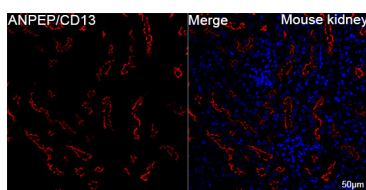
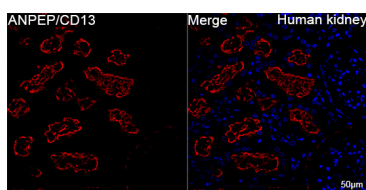
Secondary antibody: HRP-conjugated Goat anti-Mouse IgG (H+L) (AS003) at 1:10000 dilution.

Lysates/proteins: 25 µg per lane.

Blocking buffer: 3% nonfat dry milk in TBST.

Detection: ECL Basic Kit (RM00020).

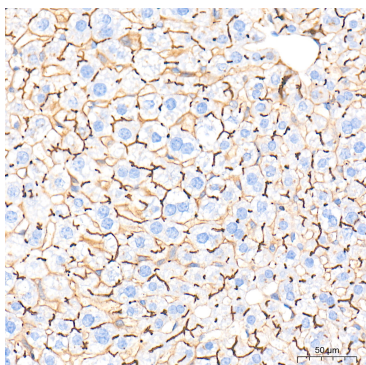
Exposure time: 20 s.



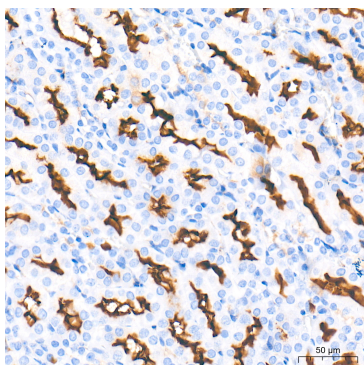
Confocal imaging of paraffin-embedded Human kidney tissue using ANPEP/CD13 Mouse mAb (A28542, dilution 1:200) followed by a further incubation with Cy3-conjugated Goat anti-Mouse IgG (H+L) (AS008, dilution 1:500) (Red). DAPI was used for nuclear staining (Blue). High pressure antigen retrieval performed with 0.01M Citrate Buffer (pH 6.0) prior to IF staining. Objective: 40x.

Confocal imaging of paraffin-embedded Mouse kidney tissue using ANPEP/CD13 Mouse mAb (A28542, dilution 1:200) followed by a further incubation with Cy3-conjugated Goat anti-Mouse IgG (H+L) (AS008, dilution 1:500) (Red). DAPI was used for nuclear staining (Blue). High pressure antigen retrieval performed with 0.01M Citrate Buffer (pH 6.0) prior to IF staining. Objective: 40x.

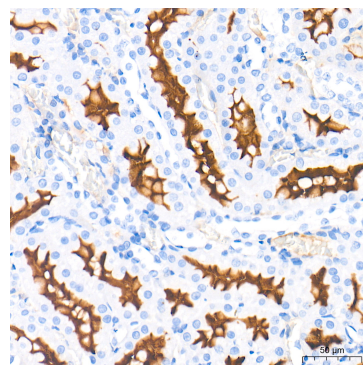
Confocal imaging of paraffin-embedded Rat kidney tissue using ANPEP/CD13 Mouse mAb (A28542, dilution 1:200) followed by a further incubation with Cy3-conjugated Goat anti-Mouse IgG (H+L) (AS008, dilution 1:500) (Red). DAPI was used for nuclear staining (Blue). High pressure antigen retrieval performed with 0.01M Citrate Buffer (pH 6.0) prior to IF staining. Objective: 40x.



Immunohistochemistry analysis of paraffin-embedded Mouse liver tissue using ANPEP/CD13 Mouse mAb (A28548) at a dilution of 1:5000 (40x lens). High pressure antigen retrieval performed with 0.01M Tris-EDTA Buffer (pH 9.0) prior to IHC staining.

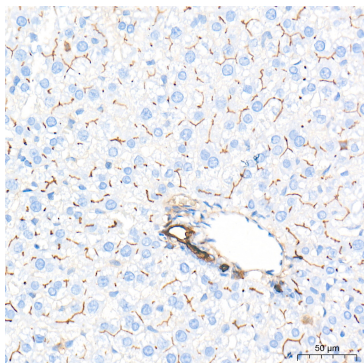


Immunohistochemistry analysis of paraffin-embedded Mouse kidney tissue using ANPEP/CD13 Mouse mAb (A28548) at a dilution of 1:5000 (40x lens). High pressure antigen retrieval performed with 0.01M Tris-EDTA Buffer (pH 9.0) prior to IHC staining.



Immunohistochemistry analysis of paraffin-embedded Rat kidney tissue using ANPEP/CD13 Mouse mAb (A28548) at a dilution of 1:5000 (40x lens). High pressure antigen retrieval performed with 0.01M Tris-EDTA Buffer (pH 9.0) prior to IHC staining.

Validation Data



Immunohistochemistry analysis of paraffin-embedded Rat liver tissue using ANPEP/CD13 Mouse mAb (A28548) at a dilution of 1:5000 (40x lens). High pressure antigen retrieval performed with 0.01M Tris-EDTA Buffer (pH 9.0) prior to IHC staining.