

[KO Validated] GSDME (Full Length+N terminal) Rabbit mAb

Catalog No.: A28582 **KO** **Validated** **Recombinant**

Basic Information

Observed MW

57 kDa(Full length)/35 kDa(N terminal)

Calculated MW

57 kDa

Category

Primary antibody

Applications

WB,IP,ELISA

Cross-Reactivity

Mouse

CloneNo number

ARC77802

Conjugate

Unmodified

Recommended Dilutions

WB 1:4000 - 1:8000

IP 0.5 µg - 4 µg antibody for
800 µg-1000 µg extracts
of whole cells

ELISA Recommended starting
concentration is 1 µg/mL.
Please optimize the
concentration based on
your specific assay
requirements. For high-
ratio antibody dilutions
(≥1:10000)a sequential
dilution method is
strongly recommended
to ensure measurement
accuracy.

Background

Enables cardiolipin binding activity. Involved in cellular response to virus and pyroptotic inflammatory response. Acts upstream of or within inner ear auditory receptor cell differentiation. Located in cytoplasm. Is expressed in several structures, including alimentary system; brain; genitourinary system; hemolymphoid system gland; and liver and biliary system. Human ortholog(s) of this gene implicated in autosomal dominant nonsyndromic deafness 5 and sensorineural hearing loss. Orthologous to human GSDME (gasdermin E).

Immunogen Information

Gene ID

54722

Swiss Prot

Q9Z2D3

Immunogen

Synthetic peptide. This information is considered to be commercially sensitive.

Synonyms

Dfna5; Fin15; Dfna5h; EG14210; 2310037D07Rik; 4932441K13Rik

Product Information

Source

Rabbit

Isotype

IgG

Purification

Affinity purification

Storage

Store at -20°C. Avoid freeze / thaw cycles.

Buffer: PBS with 0.09% Sodium azide,0.05% BSA,50% glycerol,pH7.3.

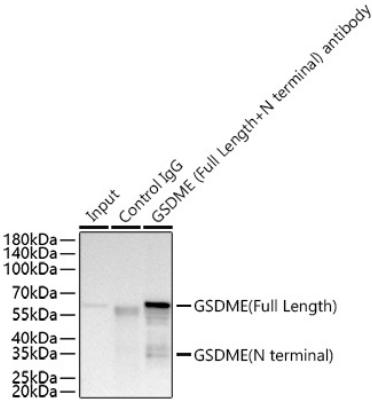
Contact

☎ | 400-999-6126

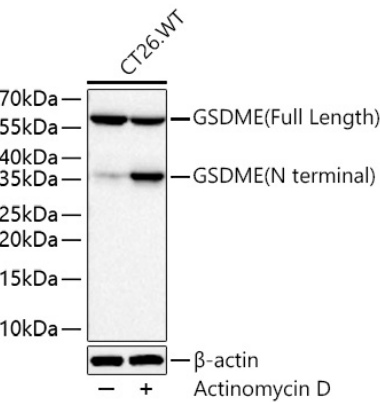
✉ | cn.market@abclonal.com.cn

🌐 | www.abclonal.com.cn

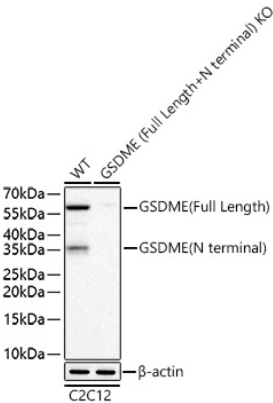
Validation Data



Immunoprecipitation of GSDME (Full Length+N terminal) from 900 µg extracts of C2C12 cells was performed using 2 µg of [KO Validated] GSDME (Full Length+N terminal) Rabbit mAb (A28582). Rabbit Control IgG (AC005) was used to precipitate the Control IgG sample. IP samples were eluted with 1x Laemmli Buffer. The Input lane represents 10% of the total input. Western blot analysis of immunoprecipitates was conducted using [KO Validated] GSDME (Full Length+N terminal) Rabbit mAb (A28582) at a dilution of 1:8000.



Western blot analysis of lysates from CT26.WT cells using [KO Validated] GSDME (Full Length+N terminal) Rabbit mAb (A28582) at 1:8000 dilution incubated overnight at 4°C. CT26.WT cells were treated with Actinomycin D (2 µg/mL) at 37°C for 24 hours. Secondary antibody: HRP-conjugated Goat anti-Rabbit IgG (H+L) (AS014) at 1:10000 dilution. Lysates/proteins: 30 µg per lane. Blocking buffer: 3% nonfat dry milk in TBST. Detection: ECL Basic Kit (RM00020). Exposure time: 60 s.



Western blot analysis of lysates from wild type (WT) and GSDME (Full Length+N terminal) knockout (KO) C2C12 cells using [KO Validated] GSDME (Full Length+N terminal) Rabbit mAb (A28582) at 1:8000 dilution incubated overnight at 4°C. Secondary antibody: HRP-conjugated Goat anti-Rabbit IgG (H+L) (AS014) at 1:10000 dilution. Lysates/proteins: 25 µg per lane. Blocking buffer: 3% nonfat dry milk in TBST. Detection: ECL Basic Kit (RM00020). Exposure time: 90 s.