

CDC37 Rabbit pAb

Catalog No.: A2859

Basic Information

Observed MW

50kDa

Calculated MW

44kDa

Category

Primary antibody

Applications

ELISA, WB, IP

Cross-Reactivity

Human, Mouse

Background

The protein encoded by this gene is highly similar to Cdc 37, a cell division cycle control protein of *Saccharomyces cerevisiae*. This protein is a molecular chaperone with specific function in cell signal transduction. It has been shown to form complex with Hsp90 and a variety of protein kinases including CDK4, CDK6, SRC, RAF-1, MOK, as well as eIF2 alpha kinases. It is thought to play a critical role in directing Hsp90 to its target kinases.

Recommended Dilutions

WB 1:200 - 1:1000

IP 0.5µg-4µg antibody for
200µg-400µg extracts of
whole cells

Immunogen Information

Gene ID

11140

Swiss Prot

Q16543

Immunogen

Recombinant fusion protein containing a sequence corresponding to amino acids 1-160 of human CDC37 (NP_008996.1).

Synonyms

P50CDC37; CDC37

Contact

☎ | 400-999-6126

✉ | cn.market@abclonal.com.cn

🌐 | www.abclonal.com.cn

Product Information

Source

Rabbit

Isotype

IgG

Purification

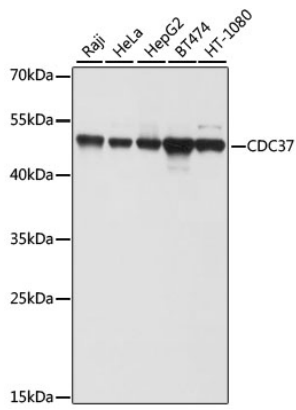
Affinity purification

Storage

Store at -20°C. Avoid freeze / thaw cycles.

Buffer: PBS with 0.02% sodium azide, 50% glycerol, pH7.3.

Validation Data



Western blot analysis of various lysates using CDC37 Rabbit pAb (A2859) at 1:1000 dilution.
Secondary antibody: HRP Goat Anti-Rabbit IgG (H+L) (AS014) at 1:10000 dilution.
Lysates/proteins: 25µg per lane.
Blocking buffer: 3% nonfat dry milk in TBST.
Detection: ECL Basic Kit (RM00020).
Exposure time: 10s.