

APC Mouse anti-Human CD192/CCR2 mAb

Catalog No.: A28626

Basic Information

Observed MW**Calculated MW**

42kDa

Category

Primary antibody

Applications

FC

Cross-Reactivity

Human

CloneNo number

AMC0897

Conjugate

APC. Ex:650nm. Em:660nm.

Background

CCR2 is a chemokine receptor that binds monocyte chemoattractant proteins (MCP-1, -2, -3, and -4). Two alternatively spliced variants (CCR2A and CCR2B) were initially described, which differ in their C-terminal cytoplasmic tails. The adhesion of monocytes to arterial endothelium and their subsequent migration into the intima are central events in the pathogenesis of atherosclerosis. Both CCR2 and MCP-1 are implicated in atherosclerotic plaque formation. MCP-1, induced in endothelial cells by modified low-density lipoprotein (LDL), may trigger firm monocyte attachment to the vascular endothelium under flow conditions. Local overexpression of MCP-1 within the vessel wall induces macrophage infiltration and the development of atherosclerotic lesions. Obesity induces a state of chronic inflammation, which is associated with numerous clinically significant complications, including insulin resistance, diabetes mellitus, atherosclerosis, and non-alcoholic fatty liver disease. CCR2 plays a critical role in the development of obesity and the associated inflammation within adipose tissue.

Recommended Dilutions

FC 5 µl per 10⁶ cells in
100 µl volume

Immunogen Information

Gene ID

729230

Swiss Prot

P41597

Immunogen

Recombinant protein (or fragment). This information is considered to be commercially sensitive.

Synonyms

CKR2; CCR-2; CCR2A; CCR2B; CD192; CKR2A; CKR2B; CMKBR2; MCP-1-R; CC-CKR-2

Contact

 | 400-999-6126 | cn.market@abclonal.com.cn | www.abclonal.com.cn

Product Information

Source

Mouse

Isotype

IgG2a, κ

Purification

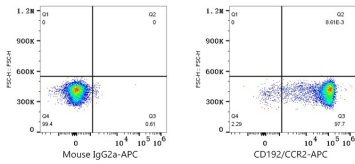
Affinity purification

Storage

Store at 2-8°C. Avoid freeze.

Buffer: PBS with 0.09% Sodium azide, 0.2% BSA, pH7.3.

Validation Data



Flow cytometry: 1X10⁶ Human PBMC were surface-stained with APC Mouse IgG2a isotype control (A26377,5 µl/Test,left) or APC Mouse anti-Human CD192/CCR2 Rabbit mAb (A28626,5 µl/Test,right). Cells in the monocyte gate were used for analysis.