

PE Rabbit anti-Human B7-H6 mAb

Catalog No.: A28628

Basic Information

Observed MW

Calculated MW

51 kDa

Category

Primary antibody

Applications

FC

Cross-Reactivity

Human

CloneNo number

ARC79756

Conjugate

PE. Ex:565nm. Em:574nm.

Background

B7H6 belongs to the B7 family (see MIM 605402) and is selectively expressed on tumor cells. Interaction of B7H6 with NKp30 (NCR3; MIM 611550) results in natural killer (NK) cell activation and cytotoxicity

Recommended Dilutions

FC 5 μ l per 10^6 cells in
100 μ l volume

Immunogen Information

Gene ID

374383

Swiss Prot

Q68D85

Immunogen

Recombinant protein (or fragment). This information is considered to be commercially sensitive.

Synonyms

B7H6; B7-H6; DKFZp686O24166

Contact

 | 400-999-6126

 | cn.market@abclonal.com.cn

 | www.abclonal.com.cn

Product Information

Source

Rabbit

Isotype

IgG

Purification

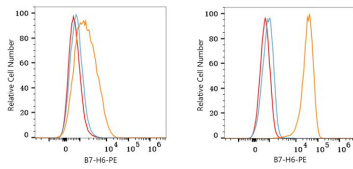
Affinity purification

Storage

Store at 2-8°C. Avoid freeze.

Buffer: PBS with 0.09% Sodium azide, 0.2% BSA, pH7.3.

Validation Data



Flow cytometry: 1×10^6 MCF7 cells (low expression, left) and K-562 cells (right) were surface-stained with PE Rabbit anti-Human B7-H6 Rabbit mAb (A28628, 5 μ l/Test, orange line) or PE Rabbit IgG isotype control (A24172, 5 μ l/Test, blue line). Non-fluorescently stained cells were used as blank control (red line).