

Anti-Monkey AIF1/IBA1 mAb

Catalog No.: A28651

Basic Information

Observed MW

Calculated MW

17 kDa

Category

Primary antibody

Applications

IHC-P

Cross-Reactivity

Cynomolgus monkey

CloneNo number

AMC50121-01

Background

Enables actin filament binding activity and calcium ion binding activity. Involved in several processes, including Rac protein signal transduction; actin filament organization; and ruffle assembly. Acts upstream of or within actin filament bundle assembly. Located in several cellular components, including actin filament; phagocytic cup; and ruffle membrane. Is expressed in adrenal cortex; central nervous system; embryo mesenchyme; and retina. Human ortholog(s) of this gene implicated in type 1 diabetes mellitus. Orthologous to human AIF1 (allograft inflammatory factor 1).

Recommended Dilutions

IHC-P 1:2000 - 1:8000

Immunogen Information

Gene ID

11629

Swiss Prot

O70200

Immunogen

Recombinant protein (or fragment). This information is considered to be commercially sensitive.

Synonyms

G1; Iba1; AIF-1; D17H6S50E

Contact

☎ | 400-999-6126

✉ | cn.market@abclonal.com.cn

🌐 | www.abclonal.com.cn

Product Information

Source

Mouse

Isotype

IgG1. Rabbit-derived mouse chimeric antibody

Purification

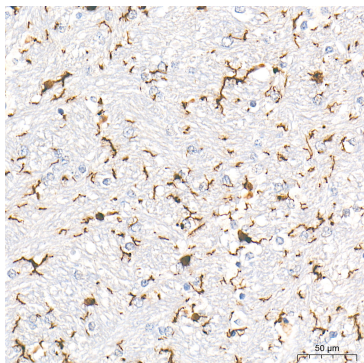
Affinity purification

Storage

Store at -20°C. Avoid freeze / thaw cycles.

Buffer: PBS with 0.09% Sodium azide, 0.05% BSA, 50% glycerol, pH7.3.

Validation Data



Immunohistochemistry analysis of paraffin-embedded Cynomolgus monkey brain tissue using Anti-Monkey AIF1/IBA1 mAb (A28651) at a dilution of 1:2000 (40x lens). High pressure antigen retrieval performed with 0.01M Tris-EDTA Buffer (pH 9.0) prior to IHC staining.