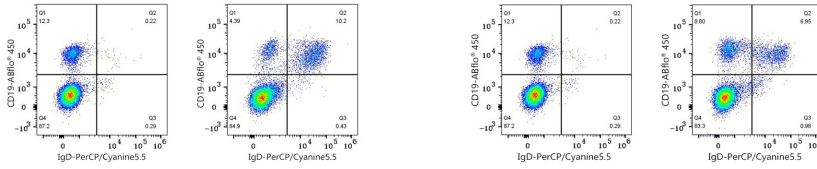




## Validation Data



Flow cytometry: 1X10<sup>6</sup> Human PBMC (negative control, left) and Rhesus PBMC (right) were surface-stained with ABflo® 450 Rabbit anti-Human/Monkey CD19 mAb (A27286, 5 µl/Test) and PerCP/Cyanine5.5 Rabbit IgG isotype control (A25620, 5 µl/Test) or PerCP/Cyanine5.5 Rabbit anti-NHP IgD mAb (A28680, 5 µl/Test).

Flow cytometry: Flow cytometry: 1X10<sup>6</sup> Human PBMC (negative control, left) and Cynomolgus PBMC (right) were surface-stained with ABflo® 450 Rabbit anti-Human/Monkey CD19 mAb (A27286, 5 µl/Test) and PerCP/Cyanine5.5 Rabbit IgG isotype control (A25620, 5 µl/Test) or PerCP/Cyanine5.5 Rabbit anti-NHP IgD mAb (A28680, 5 µl/Test).