

SLC7A9 Rabbit mAb

Catalog No.: A28695 **Recombinant**

Basic Information

Observed MW

53 kDa

Calculated MW

53 kDa

Category

Primary antibody

Applications

WB,IF-F,IHC-P,ELISA

Cross-Reactivity

Mouse

CloneNo number

ARC81955

Background

Predicted to enable amino acid transmembrane transporter activity; peptide antigen binding activity; and protein heterodimerization activity. Predicted to be involved in L-cystine transport and amino acid transmembrane transport. Located in brush border membrane. Is expressed in several structures, including metanephros and midgut. Used to study cystinuria. Human ortholog(s) of this gene implicated in cystinuria. Orthologous to human SLC7A9 (solute carrier family 7 member 9).

Recommended Dilutions

WB 1:2000 - 1:5000

IF-F 1:200 -1:600

IHC-P 1:200 - 1:600

ELISA Recommended starting concentration is 1 µg/mL. Please optimize the concentration based on your specific assay requirements. For high-ratio antibody dilutions (≥1:10000) a sequential dilution method is strongly recommended to ensure measurement accuracy.

Immunogen Information

Gene ID

30962

Swiss Prot

Q9QXA6

Immunogen

Synthetic peptide. This information is considered to be commercially sensitive.

Synonyms

CSNU3

Product Information

Source

Rabbit

Isotype

IgG

Purification

Affinity purification

Storage

Store at -20°C. Avoid freeze / thaw cycles.

Buffer: PBS with 0.09% Sodium azide,0.05% BSA,50% glycerol,pH7.3.

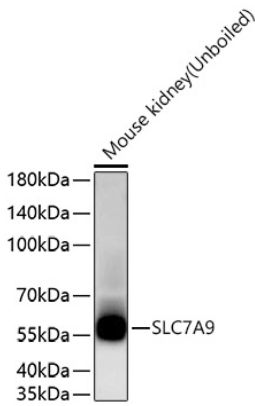
Contact

 | 400-999-6126

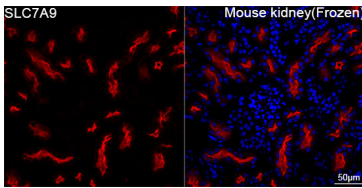
 | cn.market@abclonal.com.cn

 | www.abclonal.com.cn

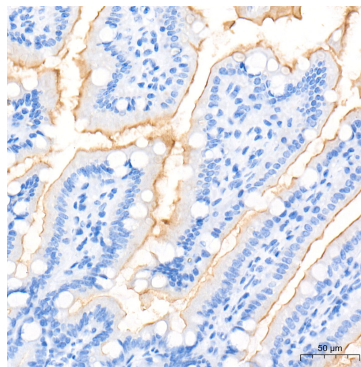
Validation Data



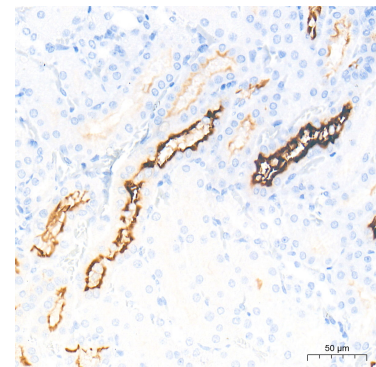
Western blot analysis of lysates from Mouse kidney using SLC7A9 Rabbit mAb (A28695) at 1:5000 dilution incubated overnight at 4°C.
Secondary antibody: HRP-conjugated Goat anti-Rabbit IgG (H+L) (AS014) at 1:10000 dilution.
Lysates/proteins: 25 µg per lane.
Blocking buffer: 3% nonfat dry milk in TBST.
Detection: ECL Basic Kit (RM00020).
Exposure time: 60 s.



Confocal imaging of frozen sections of Mouse kidney tissue using SLC7A9 Rabbit mAb (A28695, dilution 1:200) followed by a further incubation with Cy3-conjugated Goat anti-Rabbit IgG (H+L) (AS007, dilution 1:500) (Red). DAPI was used for nuclear staining (Blue). Microwave antigen retrieval performed with 0.01M Citrate Buffer (pH 6.0) prior to IF staining. Objective: 40x.



Immunohistochemistry analysis of paraffin-embedded Mouse colon tissue using SLC7A9 Rabbit mAb (A28695) at a dilution of 1:400 (40x lens). High pressure antigen retrieval performed with 0.01M Tris-EDTA Buffer (pH 9.0) prior to IHC staining.



Immunohistochemistry analysis of paraffin-embedded Mouse kidney tissue using SLC7A9 Rabbit mAb (A28695) at a dilution of 1:400 (40x lens). High pressure antigen retrieval performed with 0.01M Tris-EDTA Buffer (pH 9.0) prior to IHC staining.