

ABflo® 488 Rabbit anti-Mouse CD3ε mAb

Catalog No.: A28704

Basic Information

Observed MW

Calculated MW

Category

Primary antibody

Applications

FC

Cross-Reactivity

Mouse

CloneNo number

ARC80921

Conjugate

ABflo® 488. Ex:491nm. Em:516nm.

Background

CD3ε is a 20 kD transmembrane protein, also known as CD3 or T3. It is a member of the Ig superfamily, mainly expressed on T cells and NK-T cells, and expressed at different levels on thymocytes during the process of T cell differentiation. CD3ε forms TCR complexes by binding to CD3δ, γ and δ chains as well as TCR α/β or γ/δ chains. CD3 plays a key role in TCR signal transduction, T cell activation and antigen recognition by binding to peptide /MHC antigen complexes.

Recommended Dilutions

FC ≤0.5 µg per million cells
in 100 µl volume

Immunogen Information

Gene ID

12501

Swiss Prot

P22646

Immunogen

Recombinant protein (or fragment). This information is considered to be commercially sensitive.

Synonyms

CD3epsilon; IMD18; T3E; TCRE

Contact

☎ | 400-999-6126

✉ | cn.market@abclonal.com.cn

🌐 | www.abclonal.com.cn

Product Information

Source

Rabbit

Isotype

IgG

Purification

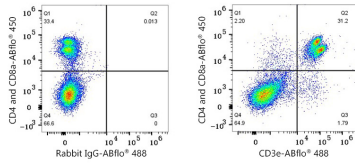
Affinity purification

Storage

Store at 2-8°C. Avoid freeze.

Buffer: PBS with 0.09% Sodium azide, 0.2% BSA, pH7.3.

Validation Data



Flow cytometry: 1×10^6 C57BL/6 mouse splenocytes were surface-stained with ABflo® 450 Rabbit anti-Mouse CD4 mAb (A25941, 5 μ l/Test), ABflo® 450 Rabbit anti-Mouse CD8a mAb (A25943, 5 μ l/Test) and ABflo® 488 Rabbit IgG isotype control (A22069, 5 μ l/Test, left) or ABflo® 488 Rabbit anti-Mouse CD3e mAb (A28704, 0.5 μ g, right).