

Monkey CD8A Rabbit PolymAb®

Catalog No.: A28747PM

Basic Information

Observed MW

Calculated MW

21 kDa/25 kDa/30 kDa

Category

Primary antibody

Applications

IHC-P, mIHC

Cross-Reactivity

Cynomolgus monkey

Background

The CD8 antigen is a cell surface glycoprotein found on most cytotoxic T lymphocytes that mediates efficient cell-cell interactions within the immune system. The CD8 antigen acts as a coreceptor with the T-cell receptor on the T lymphocyte to recognize antigens displayed by an antigen presenting cell in the context of class I MHC molecules. The coreceptor functions as either a homodimer composed of two alpha chains or as a heterodimer composed of one alpha and one beta chain. Both alpha and beta chains share significant homology to immunoglobulin variable light chains. This gene encodes the CD8 alpha chain. Multiple transcript variants encoding different isoforms have been found for this gene.

Recommended Dilutions

IHC-P 1:500 - 1:2000

mIHC 1:500 - 1:2000

Immunogen Information

Gene ID

925/12525

Swiss Prot

P01732/P01731

Immunogen

Recombinant protein (or fragment). This information is considered to be commercially sensitive.

Synonyms

CD8A; CD8; Leu2; MAL; p32

Contact

☎ | 400-999-6126

✉ | cn.market@abclonal.com.cn

🌐 | www.abclonal.com.cn

Product Information

Source

Rabbit

Isotype

IgG

Purification

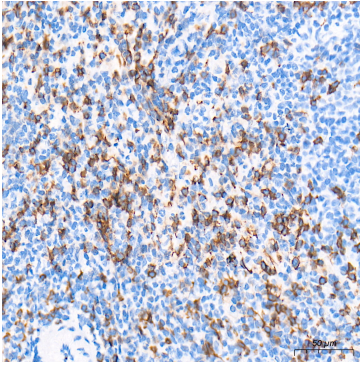
Affinity purification

Storage

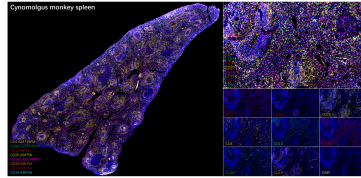
Store at -20°C. Avoid freeze / thaw cycles.

Buffer: PBS containing 50% glycerol and 0.05% BSA, preserved with proclin300 or sodium azide (as specified on the Certificate of Analysis), pH 7.3.

Validation Data



Immunohistochemistry analysis of paraffin-embedded Cynomolgus monkey spleen tissue using Monkey CD8A Rabbit PolymAb® (A28747PM) at a dilution of 1:1000 (40x lens). High pressure antigen retrieval performed with 0.01M Tris-EDTA Buffer (pH 9.0) prior to IHC staining.



The multiplex IHC analysis on paraffin-embedded Cynomolgus monkey spleen tissue using the following specific primary antibodies and tyramide signal amplification (TSA) reagents (RK05903) : Anti-Monkey CD4 PolymAb® (A28749PM, 1:400) with TSA-CFP440 (Light Brown), and Anti-Monkey CD8A Rabbit PolymAb® (A28747PM, 1:1000) with TSA-CFP490 (Green), and Anti-Monkey CD3 mAb (A28764, 1:1000) with TSA-CFP555 (Red), and Anti-Monkey CD20 mAb (A28759, 1:1000) with TSA-CFP645 (Yellow), and Anti-Monkey CD163 PolymAb® (A28748PM, 1:20000) with TSA-CFP440 (Magenta), and Anti-Monkey CD19 mAb (A28753, 1:400) with TSA-CFP490 (Orange), and Anti-Monkey CD14 mAb (A28754, 1:200) with TSA-CFP555 (Magenta), and Anti-Monkey CD16 mAb (A28756, 1:5000) with TSA-CFP649 (Cyan). DAPI (Blue) was used for nuclear staining. Prior to multiplex IHC staining, high-pressure antigen retrieval was performed using 0.01M citrate buffer at pH 6.0. The analysis was completed using a 40x objective lens.