

# PE Rabbit anti-Human/Monkey CD11b mAb

Catalog No.: A28771

## Basic Information

### Observed MW

### Calculated MW

127kDa

### Category

Primary antibody

### Applications

FC

### Cross-Reactivity

Human, Cynomolgus

### CloneNo number

ARC80870

### Conjugate

PE. Ex:565nm. Em:574nm.

## Recommended Dilutions

FC 5  $\mu$ l per  $10^6$  cells in  
100  $\mu$ l volume

## Background

The differentiation antigen cluster molecule 11b (CD11b) / integrin  $\alpha$ m (ITGAM) is a transmembrane protein that forms a heterodimer composed of  $\alpha$  and  $\beta$  subunits. CD11b is expressed in myeloid cells and is commonly used as a marker for myeloid cells, such as neutrophils, monocytes, macrophages, and microglia. CD11b is phosphorylated at the Ser1126 site (cytoplasmic tail region) in neutrophils. Studies have shown that this phosphorylation activity plays a role in the process of white blood cells transferring from the bloodstream to tissues. Additionally, genome-wide association studies have indicated that CD11b is associated with autoimmune diseases such as systemic lupus erythematosus (SLE).

## Immunogen Information

### Gene ID

Hu 3684 Cyon 101866035

### Swiss Prot

P11215

### Immunogen

Recombinant protein (or fragment). This information is considered to be commercially sensitive.

### Synonyms

CD11B; CR3A; HNA-4; MAC-1; MAC1A; MO1A; SLEB6

## Contact

☎ | 400-999-6126

✉ | [cn.market@abclonal.com.cn](mailto:cn.market@abclonal.com.cn)

🌐 | [www.abclonal.com.cn](http://www.abclonal.com.cn)

## Product Information

### Source

Rabbit

### Isotype

IgG

### Purification

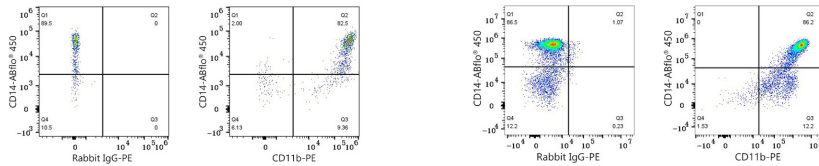
Affinity purification

### Storage

Store at 2-8°C. Avoid freeze.

Buffer: PBS with 0.09% Sodium azide, 0.2% BSA, pH7.3.

## Validation Data



Flow cytometry:  $1 \times 10^6$  Cynomolgus peripheral blood mononuclear cells were surface-stained with ABflo® 450 Rabbit anti-Human/Monkey CD14 mAb (A25196,5  $\mu\text{l}/\text{Test}$ ) and PE Rabbit IgG isotype control (A24172,5  $\mu\text{l}/\text{Test}$ ,left) or PE Rabbit anti-Human/Monkey CD11b mAb (A28771,5  $\mu\text{l}/\text{Test}$ ,right). Cells in the monocyte gate were used for analysis.

Flow cytometry:  $1 \times 10^6$  Human PBMC were surface-stained with ABflo® 450 Rabbit anti-Human/Monkey CD14 mAb (A25196,5  $\mu\text{l}/\text{Test}$ ) and PE Rabbit IgG isotype control (A24172,5  $\mu\text{l}/\text{Test}$ ,left) or PE Rabbit anti-Human/Monkey CD11b mAb (A28771,5  $\mu\text{l}/\text{Test}$ ,right). Cells in the monocyte gate were used for analysis.