

ABflo® 488 Rabbit anti-Human/Monkey CD11b mAb

Catalog No.: A28772

Basic Information

Observed MW

Calculated MW

127kDa

Category

Primary antibody

Applications

FC

Cross-Reactivity

Human, Cynomolgus

CloneNo number

ARC80870

Conjugate

ABflo® 488. Ex:491nm. Em:516nm.

Recommended Dilutions

FC 5 µl per 10⁶ cells in
100 µl volume

Background

The differentiation antigen cluster molecule 11b (CD11b) / integrin αm (ITGAM) is a transmembrane protein that forms a heterodimer composed of α and β subunits. CD11b is expressed in myeloid cells and is commonly used as a marker for myeloid cells, such as neutrophils, monocytes, macrophages, and microglia. CD11b is phosphorylated at the Ser1126 site (cytoplasmic tail region) in neutrophils. Studies have shown that this phosphorylation activity plays a role in the process of white blood cells transferring from the bloodstream to tissues. Additionally, genome-wide association studies have indicated that CD11b is associated with autoimmune diseases such as systemic lupus erythematosus (SLE).

Immunogen Information

Gene ID

3684

Swiss Prot

P11215

Immunogen

Recombinant protein (or fragment). This information is considered to be commercially sensitive.

Synonyms

CD11B; CR3A; HNA-4; MAC-1; MAC1A; MO1A; SLEB6

Contact

☎ | 400-999-6126

✉ | cn.market@abclonal.com.cn

🌐 | www.abclonal.com.cn

Product Information

Source

Rabbit

Isotype

IgG

Purification

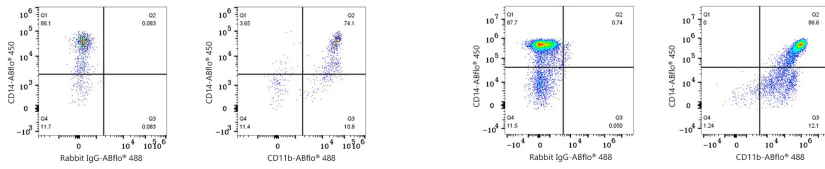
Affinity purification

Storage

Store at 2-8°C. Avoid freeze.

Buffer: PBS with 0.09% Sodium azide, 0.2% BSA, pH7.3.

Validation Data



Flow cytometry: 1×10^6 Cynomolgus peripheral blood mononuclear cells were surface-stained with ABflo® 450 Rabbit anti-Human/Monkey CD14 mAb (A25196,5 $\mu\text{l}/\text{Test}$) and ABflo® 488 Rabbit IgG isotype control (A22069,5 $\mu\text{l}/\text{Test}$,left) or ABflo® 488 Rabbit anti-Human/Monkey CD11b mAb (A28772,5 $\mu\text{l}/\text{Test}$,right). Cells in the monocyte gate were used for analysis.

Flow cytometry: 1×10^6 Human PBMC were surface-stained with ABflo® 450 Rabbit anti-Human/Monkey CD14 mAb (A25196,5 $\mu\text{l}/\text{Test}$) and ABflo® 488 Rabbit IgG isotype control (A22069,5 $\mu\text{l}/\text{Test}$,left) or ABflo® 488 Rabbit anti-Human/Monkey CD11b mAb (A28772,5 $\mu\text{l}/\text{Test}$,right). Cells in the monocyte gate were used for analysis.