

# Cullin 4A Rabbit pAb

Catalog No.: A2882 **3 Publications**

## Basic Information

### Observed MW

80kDa

### Calculated MW

88kDa

### Category

Primary antibody

### Applications

WB,IF/ICC,IP,ELISA

### Cross-Reactivity

Human, Mouse, Rat

## Background

CUL4A is the ubiquitin ligase component of a multimeric complex involved in the degradation of DNA damage-response proteins (Liu et al., 2009 [PubMed 19481525]).

## Recommended Dilutions

**WB** 1:500 - 1:2000

**IF/ICC** 1:50 - 1:100

**IP** 0.5µg-4µg antibody for  
200µg-400µg extracts of  
whole cells

**ELISA** Recommended starting  
concentration is 1 µg/mL.  
Please optimize the  
concentration based on  
your specific assay  
requirements.

## Immunogen Information

### Gene ID

8451

### Swiss Prot

Q13619

### Immunogen

Synthetic peptide. This information is considered to be commercially sensitive.

### Synonyms

CUL4A; cullin-4A; Cullin 4A

## Contact

 | 400-999-6126

 | [cn.market@abclonal.com.cn](mailto:cn.market@abclonal.com.cn)

 | [www.abclonal.com.cn](http://www.abclonal.com.cn)

## Product Information

### Source

Rabbit

### Isotype

IgG

### Purification

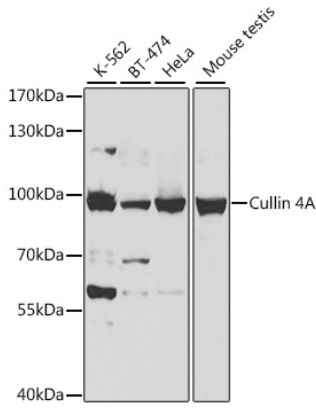
Affinity purification

### Storage

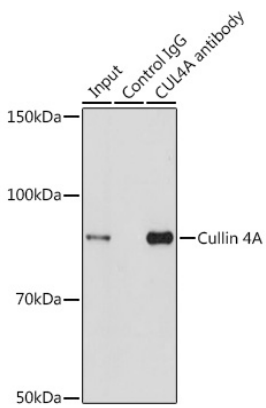
Store at -20°C. Avoid freeze / thaw cycles.

Buffer: PBS with 0.09% Sodium azide,50% glycerol,pH7.3.

## Validation Data



Western blot analysis of various lysates using Cullin 4A Rabbit pAb (A2882) at 1:500 dilution. Secondary antibody: HRP-conjugated Goat anti-Rabbit IgG (H+L) (AS014) at 1:10000 dilution. Lysates/proteins: 25µg per lane. Blocking buffer: 3% nonfat dry milk in TBST. Detection: ECL Basic Kit (RM00020). Exposure time: 5s.



Immunoprecipitation analysis of 200 µg extracts of HeLa cells using 3 µg Cullin 4A antibody (A2882). Western blot was performed from the immunoprecipitate using Cullin 4A antibody (A2882) at a dilution of 1:1000.