

PE Rabbit anti-Mouse CD62P/P-selectin mAb

Catalog No.: A28822

Basic Information

Observed MW

Calculated MW

Category

Primary antibody

Applications

FC

Cross-Reactivity

Mouse

CloneNo number

ARC76715

Conjugate

PE. Ex:565nm. Em:574nm.

Background

Mouse P-selectin (GMP-140, LECAM-3, PADGEM, CD62P) is a member of the selectin family and is a cell surface glycoprotein expressed by activated platelets and endothelial cells. After stimulation by thrombin, histamine, PMA or peroxide, P-selectin is transferred to the cell surface from the α -granules of platelets or Weibel-Palade bodies of endothelial cells within minutes. P-selectin binds to a 106 kDa protein on bone marrow cells, neutrophils, monocytes and lymphocytes, known as PSGL-1 (P-selectin glycoprotein ligand-1).

Recommended Dilutions

FC $\leq 0.25 \mu\text{g}$ per million cells
in 100 μl volume

Immunogen Information

Gene ID

20344

Swiss Prot

Q01102

Immunogen

Recombinant protein (or fragment). This information is considered to be commercially sensitive.

Synonyms

CD62P; GMP-140; Grmp; LECAM3; PADGEM

Contact

☎ | 400-999-6126

✉ | cn.market@abclonal.com.cn

🌐 | www.abclonal.com.cn

Product Information

Source

Rabbit

Isotype

IgG

Purification

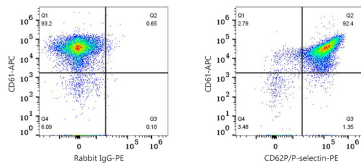
Affinity purification

Storage

Store at 2-8°C. Avoid freeze.

Buffer: PBS with 0.09% Sodium azide, 0.2% BSA, pH7.3.

Validation Data



Flow cytometry: 1×10^6 C57BL/6 mouse whole blood ($1 \mu\text{M}$ PMA, 15 min) were surface-stained with APC anti-mouse/rat CD61 Antibody ($0.25 \mu\text{g}$) and PE Rabbit IgG isotype control ($2.4172, 5 \mu\text{l}/\text{Test}$, left) or PE Rabbit anti-Mouse CD62P/P-selectin mAb ($2.8822, 0.25 \mu\text{g}$, right). Cells in the platelets gate were used for analysis.