

CAMP Rabbit mAb

Catalog No.: A28824 **Recombinant**

Basic Information

Observed MW

5 kDa(mature form),
16/18kDa(precursor)

Calculated MW

19 kDa

Category

Primary antibody

Applications

WB,IF-P,IHC-P,ELISA

Cross-Reactivity

Mouse

CloneNo number

ARC81270

Background

This gene encodes a member of the cathelicidin family of antimicrobial peptides that play an important role in the defense against microbial infection. The encoded preproprotein undergoes proteolytic processing to generate a mature polypeptide before secretion by host cells such as neutrophils, epithelial cells and macrophages. Mice lacking the encoded protein exhibit increased susceptibility to group A streptococcus and Escherichia coli infections.

Recommended Dilutions

WB 1:3000 - 1:20000

IF-P 1:200 - 1:800

IHC-P 1:2000 - 1:8000

ELISA Recommended starting concentration is 1 µg/mL. Please optimize the concentration based on your specific assay requirements. For high-ratio antibody dilutions (≥1:10000) a sequential dilution method is strongly recommended to ensure measurement accuracy.

Immunogen Information

Gene ID

12796

Swiss Prot

P51437

Immunogen

Synthetic peptide. This information is considered to be commercially sensitive.

Synonyms

CLP; Cnlp; MCLP; CAP18; Cramp; FALL39

Product Information

Source

Rabbit

Isotype

IgG

Purification

Affinity purification

Storage

Store at -20°C. Avoid freeze / thaw cycles.

Buffer: PBS with 0.09% Sodium azide,0.05% BSA,50% glycerol,pH7.3.

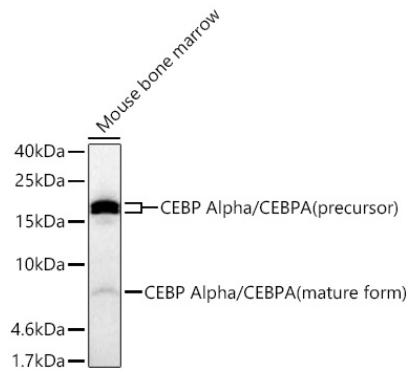
Contact

 | 400-999-6126

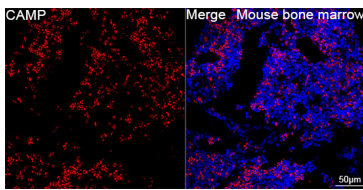
 | cn.market@abclonal.com.cn

 | www.abclonal.com.cn

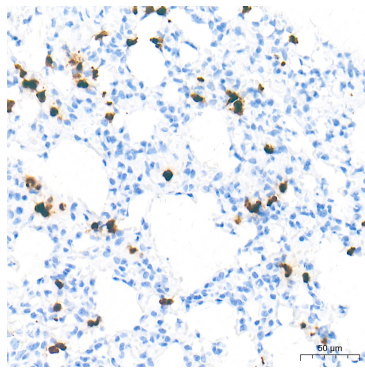
Validation Data



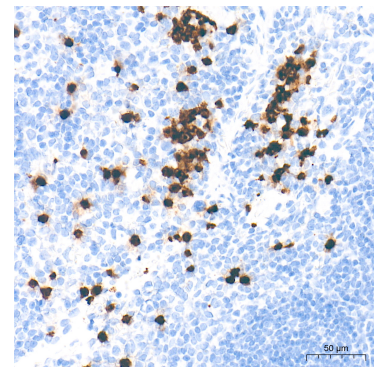
Western blot analysis of lysates from Mouse bone marrow using CAMP Rabbit mAb (A28824) at 1:5000 dilution incubated overnight at 4°C.
Secondary antibody: HRP-conjugated Goat anti-Rabbit IgG (H+L) (AS014) at 1:10000 dilution.
Lysates/proteins: 25 µg per lane.
Blocking buffer: 3% nonfat dry milk in TBST.
Detection: ECL Basic Kit (RM00020).
Exposure time: 1 s.



Confocal imaging of paraffin-embedded Mouse bone marrow tissue using CAMP Rabbit mAb (A28824, dilution 1:200) followed by a further incubation with Cy3-conjugated Goat anti-Rabbit IgG (H+L) (AS007, dilution 1:500) (Red). DAPI was used for nuclear staining (Blue). High pressure antigen retrieval performed with 0.01M Citrate Buffer (pH 6.0) prior to IF staining. Objective: 40x.



Immunohistochemistry analysis of paraffin-embedded Mouse lung tissue using CAMP Rabbit mAb (A28824) at a dilution of 1:2000 (40x lens). High pressure antigen retrieval performed with 0.01M Tris-EDTA Buffer (pH 9.0) prior to IHC staining.



Immunohistochemistry analysis of paraffin-embedded Mouse spleen tissue using CAMP Rabbit mAb (A28824) at a dilution of 1:2000 (40x lens). High pressure antigen retrieval performed with 0.01M Tris-EDTA Buffer (pH 9.0) prior to IHC staining.