

EIF4E2 Rabbit mAb

Catalog No.: A28831 **Recombinant**

Basic Information

Observed MW

28 kDa

Calculated MW

27 kDa/28 kDa

Category

Primary antibody

Applications

WB,IF-F,IHC-P,ELISA

Cross-Reactivity

Human, Mouse, Rat

CloneNo number

ARC80639

Background

Enables RNA 7-methylguanosine cap binding activity; mRNA cap binding activity; and ubiquitin protein ligase binding activity. Involved in negative regulation of translational initiation; negative regulation of type I interferon-mediated signaling pathway; and rescue of stalled ribosome. Acts upstream of with a positive effect on miRNA-mediated gene silencing by inhibition of translation. Acts upstream of or within negative regulation of translation. Located in P-body.

Recommended Dilutions

WB 1:2000 - 1:5000

IF-F 1:200 - 1:400

IHC-P 1:200 - 1:800

ELISA Recommended starting concentration is 1 µg/mL. Please optimize the concentration based on your specific assay requirements. For high-ratio antibody dilutions ($\geq 1:10000$) a sequential dilution method is strongly recommended to ensure measurement accuracy.

Immunogen Information

Gene ID

9470

Swiss Prot

O60573

Immunogen

Recombinant protein (or fragment). This information is considered to be commercially sensitive.

Synonyms

4EHP; IF4e; 4E-LP; h4EHP; EIF4EL3

Product Information

Source

Rabbit

Isotype

IgG

Purification

Affinity purification

Storage

Store at -20°C. Avoid freeze / thaw cycles.

Buffer: PBS with 0.09% Sodium azide, 0.05% BSA, 50% glycerol, pH7.3.

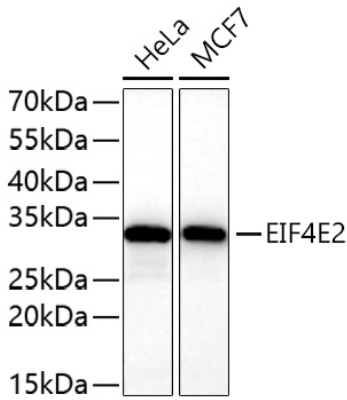
Contact

 | 400-999-6126

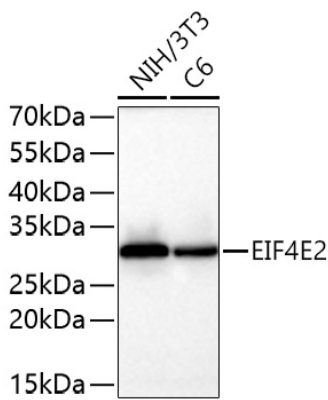
 | cn.market@abclonal.com.cn

 | www.abclonal.com.cn

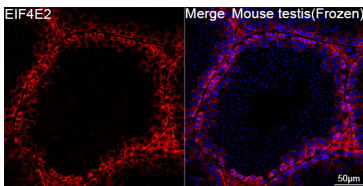
Validation Data



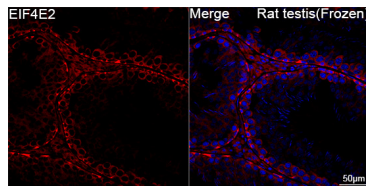
Western blot analysis of various lysates using EIF4E2 Rabbit mAb (A28831) at 1:5000 dilution incubated overnight at 4°C.
 Secondary antibody: HRP-conjugated Goat anti-Rabbit IgG (H+L) (AS014) at 1:10000 dilution.
 Lysates/proteins: 25 µg per lane.
 Blocking buffer: 3% nonfat dry milk in TBST.
 Detection: ECL Basic Kit (RM00020).
 Exposure time: 45 s.



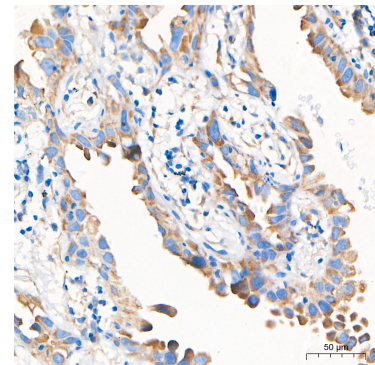
Western blot analysis of various lysates using EIF4E2 Rabbit mAb (A28831) at 1:5000 dilution incubated overnight at 4°C.
 Secondary antibody: HRP-conjugated Goat anti-Rabbit IgG (H+L) (AS014) at 1:10000 dilution.
 Lysates/proteins: 25 µg per lane.
 Blocking buffer: 3% nonfat dry milk in TBST.
 Detection: ECL Basic Kit (RM00020).
 Exposure time: 45 s.



Confocal imaging of frozen sections of Mouse testis tissue using EIF4E2 Rabbit mAb (A28831, dilution 1:200) followed by a further incubation with Cy3-conjugated Goat anti-Rabbit IgG (H+L) (AS007, dilution 1:500) (Red). DAPI was used for nuclear staining (Blue). Microwave antigen retrieval performed with 0.01M Citrate Buffer (pH 6.0) prior to IF staining. Objective: 40x.

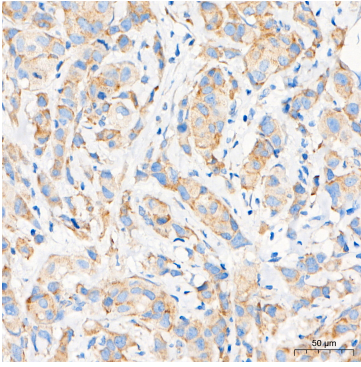


Confocal imaging of frozen sections of Rat testis tissue using EIF4E2 Rabbit mAb (A28831, dilution 1:200) followed by a further incubation with Cy3-conjugated Goat anti-Rabbit IgG (H+L) (AS007, dilution 1:500) (Red). DAPI was used for nuclear staining (Blue). Microwave antigen retrieval performed with 0.01M Citrate Buffer (pH 6.0) prior to IF staining. Objective: 40x.

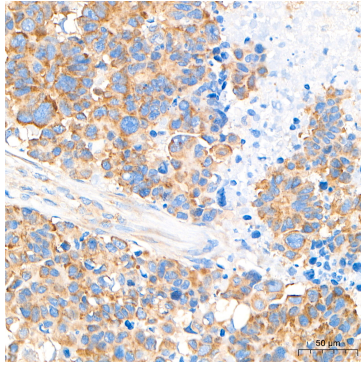


Immunohistochemistry analysis of paraffin-embedded Human lung cancer tissue using EIF4E2 Rabbit mAb (A28831) at a dilution of 1:500 (40x lens). High pressure antigen retrieval performed with 0.01M Tris-EDTA Buffer (pH 9.0) prior to IHC staining.

Validation Data



Immunohistochemistry analysis of paraffin-embedded Human breast cancer tissue using EIF4E2 Rabbit mAb (A28831) at a dilution of 1:500 (40x lens). High pressure antigen retrieval performed with 0.01M Tris-EDTA Buffer (pH 9.0) prior to IHC staining.



Immunohistochemistry analysis of paraffin-embedded Human oophoroma tissue using EIF4E2 Rabbit mAb (A28831) at a dilution of 1:500 (40x lens). High pressure antigen retrieval performed with 0.01M Tris-EDTA Buffer (pH 9.0) prior to IHC staining.