

# PE Rabbit anti-Monkey/Human CD159a mAb

Catalog No.: A28835

## Basic Information

### Observed MW

### Calculated MW

### Category

Primary antibody

### Applications

FC

### Cross-Reactivity

Human, Cynomolgus

### CloneNo number

ARC82683

### Conjugate

PE. Ex:565nm. Em:574nm.

## Background

CD159a (also known as NKG2A, encoded by the KLRC1 gene) is an inhibitory receptor on the surface of natural killer (NK) cells and some T cells. After binding to HLA-E molecules, it transmits inhibitory signals to regulate the activity of immune cells. Some viruses (such as HIV and CMV) upregulate the expression of HLA-E to bind to CD159a and inhibit the function of NK cells. Blocking the NKG2A/HLA-E pathway can restore antiviral immunity.

## Recommended Dilutions

FC 5  $\mu$ l per  $10^6$  cells in  
100  $\mu$ l volume

## Immunogen Information

### Gene ID

102121106

### Swiss Prot

[P08628](#)

### Immunogen

Recombinant protein (or fragment). This information is considered to be commercially sensitive.

### Synonyms

nkg2A

## Contact

 | 400-999-6126

 | [cn.market@abclonal.com.cn](mailto:cn.market@abclonal.com.cn)

 | [www.abclonal.com.cn](http://www.abclonal.com.cn)

## Product Information

### Source

Rabbit

### Isotype

IgG

### Purification

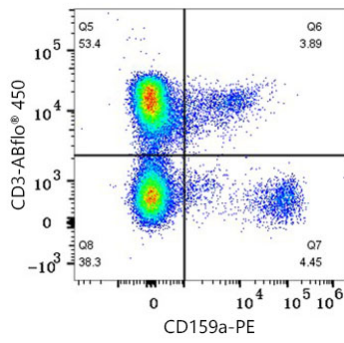
Affinity purification

### Storage

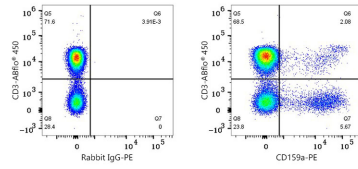
Store at 2-8°C. Avoid freeze.

Buffer: PBS with 0.09% Sodium azide, 0.2% BSA, pH7.3.

## Validation Data



Flow cytometry: 1X10<sup>6</sup> Cynomolgus PBMC were surface-stained with ABflo® 450 Rabbit anti-Human/Monkey CD3 mAb (A27177,5 µl/Test) and PE Rabbit anti-Monkey/Human CD159a mAb (A28835,5 µl/Test). Cells in the lymphocyte gate were used for analysis.



Flow cytometry: 1X10<sup>6</sup> Human PBMC were surface-stained with ABflo® 450 Rabbit anti-Human/Monkey CD3 mAb (A27177,5 µl/Test) and PE Rabbit IgG isotype control (A24172,5 µl/Test,left) or PE Rabbit anti-Monkey/Human CD159a mAb (A28835,5 µl/Test,right). Cells in the lymphocyte gate were used for analysis.