

# APC Rabbit anti-Monkey/Human CD159a mAb

Catalog No.: A28836

## Basic Information

### Observed MW

### Calculated MW

### Category

Primary antibody

### Applications

FC

### Cross-Reactivity

Human, Cynomolgus

### CloneNo number

ARC82683

### Conjugate

APC. Ex:650nm. Em:660nm.

## Background

CD159a (also known as NKG2A, encoded by the KLRC1 gene) is an inhibitory receptor on the surface of natural killer (NK) cells and some T cells. After binding to HLA-E molecules, it transmits inhibitory signals to regulate the activity of immune cells. Some viruses (such as HIV and CMV) upregulate the expression of HLA-E to bind to CD159a and inhibit the function of NK cells. Blocking the NKG2A/HLA-E pathway can restore antiviral immunity.

## Recommended Dilutions

FC 5  $\mu$ l per  $10^6$  cells in  
100  $\mu$ l volume

## Immunogen Information

### Gene ID

102121106

### Swiss Prot

[P08631](#)

### Immunogen

Recombinant protein (or fragment). This information is considered to be commercially sensitive.

### Synonyms

nkg2A

## Contact

 | 400-999-6126

 | [cn.market@abclonal.com.cn](mailto:cn.market@abclonal.com.cn)

 | [www.abclonal.com.cn](http://www.abclonal.com.cn)

## Product Information

### Source

Rabbit

### Isotype

IgG

### Purification

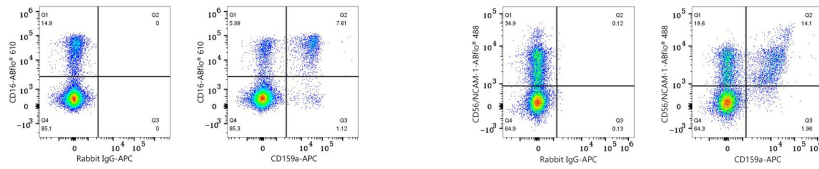
Affinity purification

### Storage

Store at 2-8°C. Avoid freeze.

Buffer: PBS with 0.09% Sodium azide, 0.2% BSA, pH7.3.

## Validation Data



Flow cytometry:  $1 \times 10^6$  Cynomolgus PBMC were surface-stained with ABflo® 610 Rabbit anti-Human/Monkey CD16 mAb (A28073, 5  $\mu$ l/Test) and APC Rabbit IgG isotype control (A24173, 5  $\mu$ l/Test, left) or APC Rabbit anti-Monkey/Human CD159a mAb (A28836, 5  $\mu$ l/Test, right). Cells in the lymphocyte gate were used for analysis.

Flow cytometry:  $1 \times 10^6$  Human PBMC were surface-stained with ABflo® 488 Rabbit anti-Human CD56/NCAM-1 mAb (A26933, 5  $\mu$ l/Test) and APC Rabbit IgG isotype control (A24173, 5  $\mu$ l/Test, left) or APC Rabbit anti-Monkey/Human CD159a mAb (A28836, 5  $\mu$ l/Test, right). Cells in the lymphocyte gate were used for analysis.