

# FITC Rabbit anti-Mouse CD16 mAb

Catalog No.: A28838

## Basic Information

### Observed MW

### Calculated MW

### Category

Primary antibody

### Applications

FC

### Cross-Reactivity

Mouse

### CloneNo number

ARC80268

### Conjugate

FITC. Ex:491nm. Em:516nm.

## Background

CD16 is also known as Fcgr3 and is a 50-65 kd type I transmembrane protein. It is a member of the Fcy receptor family and the Ig superfamily. CD16 is expressed on most myeloid cells, including monocytes, macrophages, and dendritic cells. NK cells and NKT cells also express CD16. CD16 is involved in cell activation, phagocytosis, and antibody-dependent cell-mediated cytotoxicity (ADCC); its ligands are IgG1, IgG2a, and IgG2b.

## Recommended Dilutions

FC ≤0.5 µg per million cells  
in 100 µl volume

## Immunogen Information

### Gene ID

14131

### Swiss Prot

A0A0B4J1M6

### Immunogen

Recombinant protein (or fragment). This information is considered to be commercially sensitive.

### Synonyms

CD16

## Contact

☎ | 400-999-6126

✉ | [cn.market@abclonal.com.cn](mailto:cn.market@abclonal.com.cn)

🌐 | [www.abclonal.com.cn](http://www.abclonal.com.cn)

## Product Information

### Source

Rabbit

### Isotype

IgG

### Purification

Affinity purification

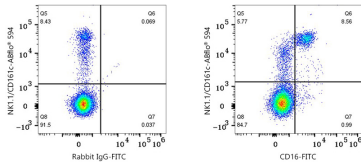
### Storage

Store at 2-8°C. Avoid freeze.

Buffer: PBS with 0.09% Sodium azide, 0.2% BSA, pH7.3.

## Validation Data

---



Flow cytometry:  $1 \times 10^6$  C57BL/6 mouse splenocytes were surface-stained with ABflo® 594 Rabbit anti-Mouse NK1.1/CD161c mAb (A24923, 5  $\mu$ l/Test) and FITC Rabbit IgG isotype control (A25616, 5  $\mu$ l/Test, left) or FITC Rabbit anti-Mouse CD16 mAb (A28838, 0.5  $\mu$ g, right).