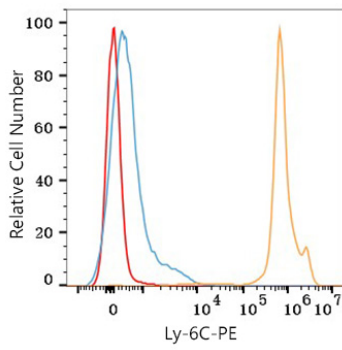




## Validation Data

---



Flow cytometry:  $1 \times 10^6$  C57BL/6 mouse bone marrow cells were surface-stained with PE Rabbit anti-Mouse Ly-6C mAb (A28841, 0.25  $\mu$ g, orange line) or PE Rabbit IgG isotype control (A24172, 5  $\mu$ l/Test, blue line). Non-fluorescently stained cells were used as blank control (red line).