

Caspase-1 Rabbit mAb

Catalog No.: A28849 **Recombinant**

Basic Information

Observed MW

22-35 kDa (cleaved)/48 kDa (pro)

Calculated MW

46 kDa

Category

Primary antibody

Applications

WB, ELISA

Cross-Reactivity

Mouse, Rat

CloneNo number

ARC81333

Background

Enables cysteine-type endopeptidase activity. Involved in several processes, including AIM2 inflammasome complex assembly; positive regulation of canonical NF-kappaB signal transduction; and positive regulation of interleukin-1 beta production. Acts upstream of or within several processes, including membrane hyperpolarization; mitochondrial depolarization; and positive regulation of cytokine production. Located in extracellular region. Part of IPAF inflammasome complex. Is active in cytosol. Is expressed in several structures, including forelimb mesenchyme; knee joint; oocyte; small intestine; and telencephalon. Orthologous to human CASP1 (caspase 1).

Recommended Dilutions

WB 1:10000 - 1:80000

ELISA Recommended starting concentration is 1 µg/mL. Please optimize the concentration based on your specific assay requirements. For high-ratio antibody dilutions ($\geq 1:10000$) a sequential dilution method is strongly recommended to ensure measurement accuracy.

Immunogen Information

Gene ID

12362

Swiss Prot

P29452

Immunogen

Recombinant protein (or fragment). This information is considered to be commercially sensitive.


Synonyms

ICE; I11bc

Contact

 | 400-999-6126

 | cn.market@abclonal.com.cn

 | www.abclonal.com.cn

Product Information

Source

Rabbit

Isotype

IgG

Purification

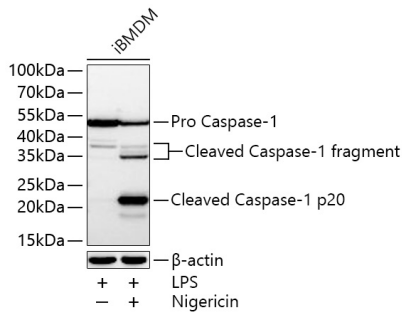
Affinity purification

Storage

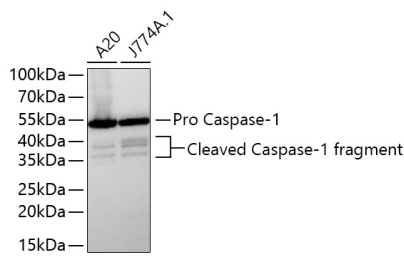
Store at -20°C. Avoid freeze / thaw cycles.

Buffer: PBS with 0.09% Sodium azide, 0.05% BSA, 50% glycerol, pH7.3.

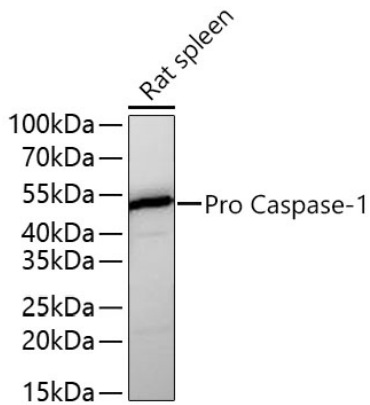
Validation Data



Western blot analysis of various lysates using Caspase-1 Rabbit mAb (A28849) at 1:40000 dilution incubated overnight at 4°C. iBMDM cells were treated with LPS (1 µg/mL) at 37°C for 5 hours, iBMDM cells were treated with LPS (1 µg/mL) at 37°C for 4 hours and Nigericin (15 µM) at 37°C for 1 hour. Secondary antibody: HRP-conjugated Goat anti-Rabbit IgG (H+L) (AS014) at 1:10000 dilution. Lysates/proteins: 30 µg per lane. Blocking buffer: 3% nonfat dry milk in TBST. Detection: ECL Basic Kit (RM00020). Exposure time: 5 s.



Western blot analysis of various lysates using Caspase-1 Rabbit mAb (A28849) at 1:40000 dilution incubated overnight at 4°C. Secondary antibody: HRP-conjugated Goat anti-Rabbit IgG (H+L) (AS014) at 1:10000 dilution. Lysates/proteins: 25 µg per lane. Blocking buffer: 3% nonfat dry milk in TBST. Detection: ECL Basic Kit (RM00020). Exposure time: 5 s.



Western blot analysis of lysates from Rat spleen using Caspase-1 Rabbit mAb (A28849) at 1:40000 dilution incubated overnight at 4°C. Secondary antibody: HRP-conjugated Goat anti-Rabbit IgG (H+L) (AS014) at 1:10000 dilution. Lysates/proteins: 25 µg per lane. Blocking buffer: 3% nonfat dry milk in TBST. Detection: ECL Basic Kit (RM00020). Exposure time: 60 s.