

# AMOTL2 Rabbit mAb

Catalog No.: A28851 **Recombinant**

## Basic Information

### Observed MW

100 kDa

### Calculated MW

86 kDa/85 kDa/92 kDa

### Category

Primary antibody

### Applications

WB,IP,IF-F,ELISA

### Cross-Reactivity

Human, Mouse, Rat

### CloneNo number

ARC82376

## Background

Angiomotin is a protein that binds angiotatin, a circulating inhibitor of the formation of new blood vessels (angiogenesis). Angiomotin mediates angiotatin inhibition of endothelial cell migration and tube formation in vitro. The protein encoded by this gene is related to angiomotin and is a member of the motin protein family. Alternative splicing results in multiple transcript variants of this gene.

## Recommended Dilutions

**WB** 1:2000 - 1:10000

**IP** 0.5 µg - 4 µg antibody for  
200 µg - 400 µg extracts  
of whole cells

**IF-F** 1:100 - 1:400

**ELISA** Recommended starting concentration is 1 µg/mL. Please optimize the concentration based on your specific assay requirements. For high-ratio antibody dilutions (≥1:10000) a sequential dilution method is strongly recommended to ensure measurement accuracy.

## Immunogen Information

### Gene ID

51421

### Swiss Prot

Q9Y2J4

### Immunogen

Recombinant protein (or fragment). This information is considered to be commercially sensitive.

### Synonyms

LCCP

## Product Information

### Source

Rabbit

### Isotype

IgG

### Purification

Affinity purification

### Storage

Store at -20°C. Avoid freeze / thaw cycles.

Buffer: PBS with 0.09% Sodium azide, 0.05% BSA, 50% glycerol, pH7.3.

## Contact

---

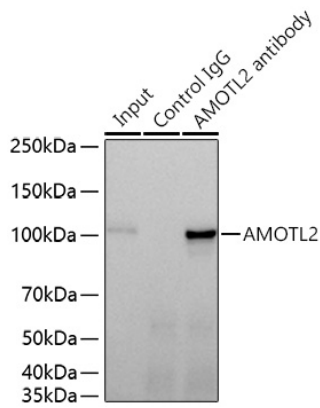
 | 400-999-6126

 | [cn.market@abclonal.com.cn](mailto:cn.market@abclonal.com.cn)

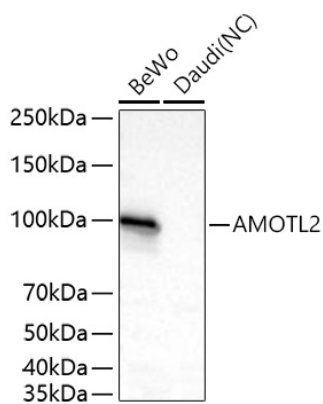
 | [www.abclonal.com.cn](http://www.abclonal.com.cn)

---

## Validation Data



Immunoprecipitation of AMOTL2 from 300  $\mu$ g extracts of A-431 cells was performed using 2  $\mu$ g of AMOTL2 Rabbit mAb (A28851). Rabbit Control IgG (AC005) was used to precipitate the Control IgG sample. IP samples were eluted with 1x Laemmli Buffer. The Input lane represents 10% of the total input. Western blot analysis of immunoprecipitates was conducted using AMOTL2 Rabbit mAb (A28851) at a dilution of 1:5000.



Western blot analysis of various lysates using AMOTL2 Rabbit mAb (A28851) at 1:5000 dilution incubated overnight at 4°C.

Secondary antibody: HRP-conjugated Goat anti-Rabbit IgG (H+L) (AS014) at 1:10000 dilution.

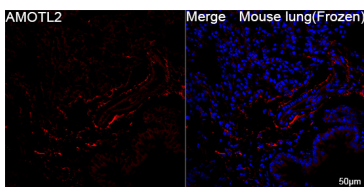
Lysates/proteins: 25  $\mu$ g per lane.

Blocking buffer: 3% nonfat dry milk in TBST.

Detection: ECL Basic Kit (RM00020).

Negative control (NC): Daudi.

Exposure time: 20 s.



Confocal imaging of frozen sections of Mouse lung tissue using AMOTL2 Rabbit mAb (A28851, dilution 1:200) followed by a further incubation with Cy3-conjugated Goat anti-Rabbit IgG (H+L) (AS007, dilution 1:500) (Red). DAPI was used for nuclear staining (Blue). Microwave antigen retrieval performed with 0.01M Citrate Buffer (pH 6.0) prior to IF staining. Objective: 40x.