

Anti-Monkey ENO2 mAb

Catalog No.: A28856

Basic Information

Observed MW

Calculated MW

47 kDa

Category

Primary antibody

Applications

IHC-P

Cross-Reactivity

Cynomolgus monkey

CloneNo number

ARC5337-01

Background

This gene encodes one of the three enolase isoenzymes found in mammals. This isoenzyme, a homodimer, is found in mature neurons and cells of neuronal origin. A switch from alpha enolase to gamma enolase occurs in neural tissue during development in rats and primates.

Recommended Dilutions

IHC-P 1:1000 - 1:4000

Immunogen Information

Gene ID

2026

Swiss Prot

P09104

Immunogen

This information is considered to be commercially sensitive.

Synonyms

NSE; HEL-S-279

Contact

☎ | 400-999-6126

✉ | cn.market@abclonal.com.cn

🌐 | www.abclonal.com.cn

Product Information

Source

Rabbit

Isotype

IgG

Purification

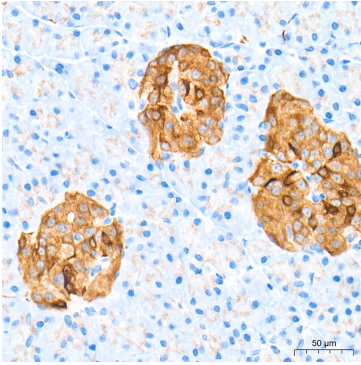
Affinity purification

Storage

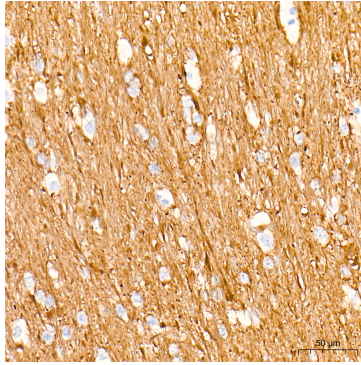
Store at -20°C. Avoid freeze / thaw cycles.

Buffer: PBS containing 50% glycerol and 0.05% BSA, preserved with proclin300 or sodium azide (as specified on the Certificate of Analysis), pH 7.3.

Validation Data



Immunohistochemistry analysis of paraffin-embedded Cynomolgus monkey pancreas tissue using Anti-Monkey ENO2 mAb (A28856) at a dilution of 1:2000 (40x lens). High pressure antigen retrieval performed with 0.01M Tris-EDTA Buffer (pH 9.0) prior to IHC staining.



Immunohistochemistry analysis of paraffin-embedded Cynomolgus monkey brain tissue using Anti-Monkey ENO2 mAb (A28856) at a dilution of 1:2000 (40x lens). High pressure antigen retrieval performed with 0.01M Tris-EDTA Buffer (pH 9.0) prior to IHC staining.