

IFN-beta Rabbit mAb

Catalog No.: A28869 **Recombinant**

Basic Information

Observed MW

19 kDa/21 kDa

Calculated MW

22 kDa

Category

Primary antibody

Applications

WB,IP,IF/ICC,IHC-P,ELISA

Cross-Reactivity

Human

CloneNo number

ARC81032

Background

This gene encodes a cytokine that belongs to the interferon family of signaling proteins, which are released as part of the innate immune response to pathogens. The protein encoded by this gene belongs to the type I class of interferons, which are important for defense against viral infections. In addition, type I interferons are involved in cell differentiation and anti-tumor defenses. Following secretion in response to a pathogen, type I interferons bind a homologous receptor complex and induce transcription of genes such as those encoding inflammatory cytokines and chemokines. Overactivation of type I interferon secretion is linked to autoimmune diseases. Mice deficient for this gene display several phenotypes including defects in B cell maturation and increased susceptibility to viral infection.

Recommended Dilutions

WB 1:2000 - 1:15000

IP 0.5 µg - 4 µg antibody for
200 µg - 400 µg extracts
of whole cells

IF/ICC 1:200 - 1:800

IHC-P 1:1500 - 1:6000

ELISA Recommended starting concentration is 1 µg/mL. Please optimize the concentration based on your specific assay requirements. For high-ratio antibody dilutions ($\geq 1:10000$) a sequential dilution method is strongly recommended to ensure measurement accuracy.

Immunogen Information

Gene ID

3456

Swiss Prot

P01574

Immunogen

Recombinant protein (or fragment). This information is considered to be commercially sensitive.

Synonyms

IFB; IFF; IFNB; IFN-beta

Product Information

Source

Rabbit

Isotype

IgG

Purification

Affinity purification

Storage

Store at -20°C. Avoid freeze / thaw cycles.

Buffer: PBS with 0.09% Sodium azide, 0.05% BSA, 50% glycerol, pH7.3.

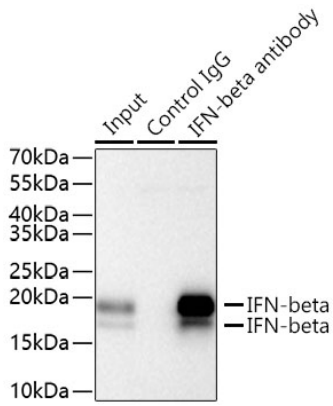
Contact

 | 400-999-6126

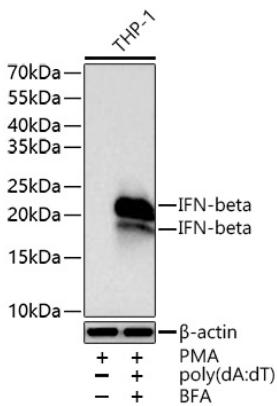
 | cn.market@abclonal.com.cn

 | www.abclonal.com.cn

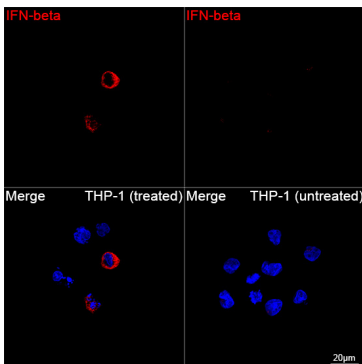
Validation Data



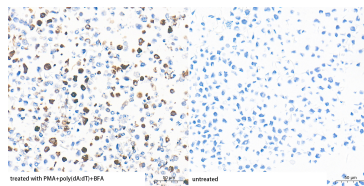
Immunoprecipitation of IFN-beta from 300 µg extracts of THP-1 cells treated with PMA(80 nM,48 h), poly(dA:dT)(5 µg/mL,4 h) and BFA(300 ng/mL,19 h) was performed using 1 µg of IFN-beta Rabbit mAb (A28869). Rabbit Control IgG (AC005) was used to precipitate the Control IgG sample. IP samples were eluted with 1x Laemmli Buffer. The Input lane represents 10% of the total input. Western blot analysis of immunoprecipitates was conducted using IFN-beta Rabbit mAb (A28869) at a dilution of 1:5000.



Western blot analysis of various lysates using IFN-beta Rabbit mAb (A28869) at 1:5000 dilution incubated overnight at 4°C. THP-1 cells were treated with PMA (80 nM) at 37°C for 48 hours, poly(dA:dT) (5 µg/mL) at 37°C for 4 hours and BFA (300 ng/mL) at 37°C for 19 hours. Secondary antibody: HRP-conjugated Goat anti-Rabbit IgG (H+L) (AS014) at 1:10000 dilution. Lysates/proteins: 30 µg per lane. Blocking buffer: 3% nonfat dry milk in TBST. Detection: ECL Basic Kit (RM00020). Exposure time: 5 s.



Confocal imaging of THP-1 cells (treated with PMA, poly(dA:dT) and BFA) and THP-1 cells (untreated) using IFN-beta Rabbit mAb (A28869, dilution 1:200) followed by a further incubation with Cy3-conjugated Goat anti-Rabbit IgG (H+L) (AS007, dilution 1:500) (Red). DAPI was used for nuclear staining (Blue). Objective: 100x.



Immunohistochemistry analysis of paraffin-embedded THP-1 cells, PMA, poly(dA:dT) and BFA-treated (left) and untreated (right), using IFN-beta Rabbit mAb (A28869) at a dilution of 1:5000 (40x lens). High pressure antigen retrieval performed with 0.01M Tris-EDTA Buffer (pH 9.0) prior to IHC staining.