

Anti-Monkey MBP mAb

Catalog No.: A28873

Basic Information

Observed MW

Refer to figures

Calculated MW

33 kDa

Category

Primary antibody

Applications

mIHC

Cross-Reactivity

Cynomolgus monkey

CloneNo number

ARC5383-01

Background

The protein encoded by the classic MBP gene is a major constituent of the myelin sheath of oligodendrocytes and Schwann cells in the nervous system. However, MBP-related transcripts are also present in the bone marrow and the immune system. These mRNAs arise from the long MBP gene (otherwise called "Golli-MBP") that contains 3 additional exons located upstream of the classic MBP exons. Alternative splicing from the Golli and the MBP transcription start sites gives rise to 2 sets of MBP-related transcripts and gene products. The Golli mRNAs contain 3 exons unique to Golli-MBP, spliced in-frame to 1 or more MBP exons. They encode hybrid proteins that have N-terminal Golli aa sequence linked to MBP aa sequence. The second family of transcripts contain only MBP exons and produce the well characterized myelin basic proteins. This complex gene structure is conserved among species suggesting that the MBP transcription unit is an integral part of the Golli transcription unit and that this arrangement is important for the function and/or regulation of these genes.

Recommended Dilutions

mIHC 1:10000-1:30000

Immunogen Information

Gene ID

4155

Swiss Prot

P02686

Immunogen

Recombinant protein (or fragment). This information is considered to be commercially sensitive.

Synonyms

MBP

Contact

☎ | 400-999-6126

✉ | cn.market@abclonal.com.cn

🌐 | www.abclonal.com.cn

Product Information

Source

Rabbit

Isotype

IgG

Purification

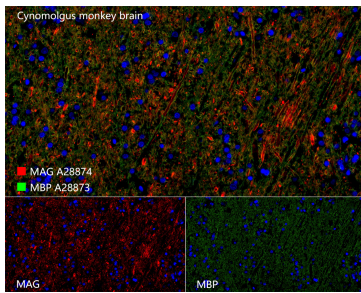
Affinity purification

Storage

Store at -20°C. Avoid freeze / thaw cycles.

Buffer: PBS containing 50% glycerol and 0.05% BSA, preserved with proclin300 or sodium azide (as specified on the Certificate of Analysis), pH 7.3.

Validation Data



The multiplex IHC analysis on paraffin-embedded Cynomolgus monkey brain tissue using the following specific primary antibodies and tyramide signal amplification (TSA) reagents (RK05903) : Anti-Monkey MBP mAb (A28873, 1:15000) with TSA-TYR-520 (Green), and Anti-Monkey MAG mAb (A28874, 1:2000) with TSA-TYR-570 (Red). DAPI (Blue) was used for nuclear staining. Prior to multiplex IHC staining, high-pressure antigen retrieval was performed using 0.01M citrate buffer at pH 6.0. The analysis was completed using a 40x objective lens.