

CX3CR1 Rabbit pAb

Catalog No.: A2890 **2 Publications**

Basic Information

Observed MW

52kDa

Calculated MW

40kDa

Category

Primary antibody

Applications

WB,IHC-P,ELISA

Cross-Reactivity

Human, Mouse, Rat

Background

Fractalkine is a transmembrane protein and chemokine involved in the adhesion and migration of leukocytes. The protein encoded by this gene is a receptor for fractalkine. The encoded protein also is a coreceptor for HIV-1, and some variations in this gene lead to increased susceptibility to HIV-1 infection and rapid progression to AIDS. Four transcript variants encoding two different isoforms have been found for this gene.

Recommended Dilutions

WB 1:500 - 1:1000

IHC-P 1:50 - 1:200

ELISA Recommended starting concentration is 1 µg/mL. Please optimize the concentration based on your specific assay requirements.

Immunogen Information

Gene ID

1524

Swiss Prot

P49238

Immunogen

A synthetic peptide corresponding to a sequence within amino acids 100-200 of human CX3CR1 (NP_001328.1).

Synonyms

V28; CCRL1; GPR13; CMKDR1; GPRV28; CMKBRL1; CX3CR1

Contact

☎ | 400-999-6126

✉ | cn.market@abclonal.com.cn

🌐 | www.abclonal.com.cn

Product Information

Source

Rabbit

Isotype

IgG

Purification

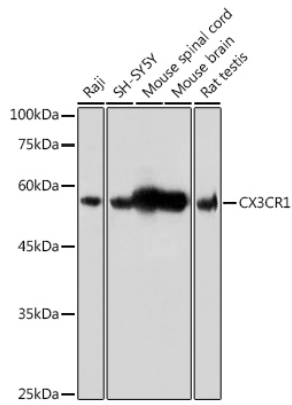
Affinity purification

Storage

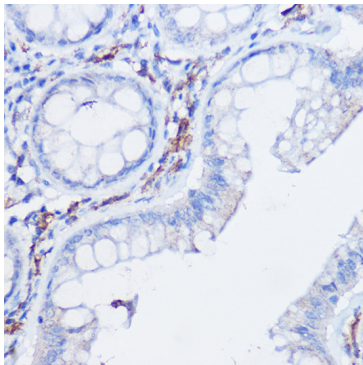
Store at -20°C. Avoid freeze / thaw cycles.

Buffer: PBS with 0.05% proclin300,50% glycerol,pH7.3.

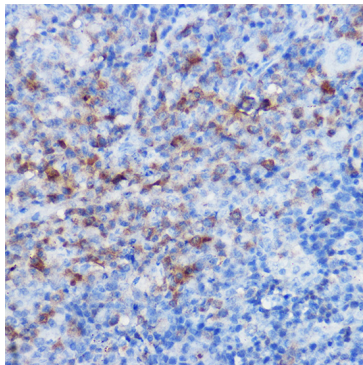
Validation Data



Western blot analysis of various lysates using CX3CR1 Rabbit pAb (A2890) at 1:500 dilution. Secondary antibody: HRP-conjugated Goat anti-Rabbit IgG (H+L) (AS014) at 1:10000 dilution. Lysates/proteins: 25µg per lane. Blocking buffer: 3% nonfat dry milk in TBST. Detection: ECL Basic Kit (RM00020). Exposure time: 1s.



Immunohistochemistry analysis of paraffin-embedded Human colon carcinoma using CX3CR1 Rabbit pAb (A2890) at dilution of 1:20 (40x lens). Microwave antigen retrieval performed with 0.05M Tris/EDTA Buffer (pH 8.0) prior to IHC staining.



Immunohistochemistry analysis of paraffin-embedded Rat spleen using CX3CR1 Rabbit pAb (A2890) at dilution of 1:20 (40x lens). Microwave antigen retrieval performed with 0.05M Tris/EDTA Buffer (pH 8.0) prior to IHC staining.