

[KD Validated] SOD1 Rabbit mAb

Catalog No.: A28901 **Recombinant**

Basic Information

Observed MW

16-18 kDa

Calculated MW

16 kDa

Category

Primary antibody

Applications

WB,IHC-P,ELISA

Cross-Reactivity

Human, Mouse, Rat

CloneNo number

ARC3664

Background

The protein encoded by this gene binds copper and zinc ions and is one of two isozymes responsible for destroying free superoxide radicals in the body. The encoded isozyme is a soluble cytoplasmic protein, acting as a homodimer to convert naturally-occurring but harmful superoxide radicals to molecular oxygen and hydrogen peroxide. The other isozyme is a mitochondrial protein. In addition, this protein contains an antimicrobial peptide that displays antibacterial, antifungal, and anti-MRSA activity against *E. coli*, *E. faecalis*, *S. aureus*, *S. aureus* MRSA LPV+, *S. agalactiae*, and yeast *C. krusei*. Mutations in this gene have been implicated as causes of familial amyotrophic lateral sclerosis. Rare transcript variants have been reported for this gene.

Recommended Dilutions

WB 1:1000 - 1:10000

IHC-P 1:1000 - 1:4000

ELISA Recommended starting concentration is 1 µg/mL. Please optimize the concentration based on your specific assay requirements. For high-ratio antibody dilutions (≥1:10000) a sequential dilution method is strongly recommended to ensure measurement accuracy.

Immunogen Information

Gene ID

6647

Swiss Prot

P00441

Immunogen

This information is considered to be commercially sensitive.

Synonyms

ALS; SOD; ALS1; IPOA; STAHP; hSod1; HEL-S-44; homodimer; SOD1

Product Information

Source

Rabbit

Isotype

IgG

Purification

Affinity purification

Storage

Store at -20°C. Avoid freeze / thaw cycles.

Buffer: PBS with 0.09% sodium azide, 0.05% BSA, 50% glycerol, pH7.3.

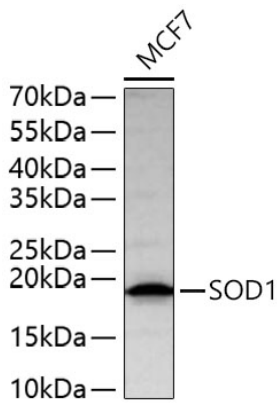
Contact

☎ | 400-999-6126

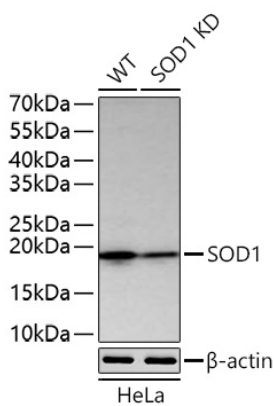
✉ | cn.market@abclonal.com.cn

🌐 | www.abclonal.com.cn

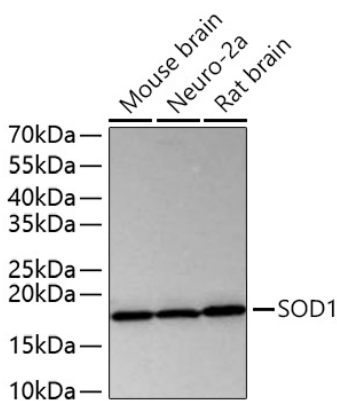
Validation Data



Western blot analysis of lysates from MCF7 cells using [KD Validated] SOD1 Rabbit mAb (A28901) at 1:2000 dilution incubated overnight at 4°C.
Secondary antibody: HRP-conjugated Goat anti-Rabbit IgG (H+L) (AS014) at 1:10000 dilution.
Lysates/proteins: 25 µg per lane.
Blocking buffer: 3% nonfat dry milk in TBST.
Detection: ECL Basic Kit (RM00020).
Exposure time: 1 s.

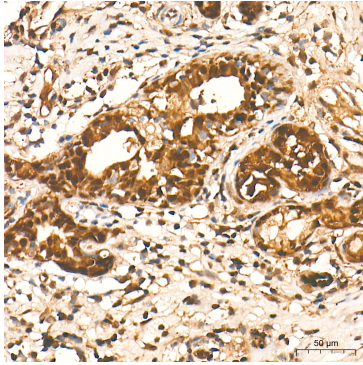


Western blot analysis of lysates from wild type (WT) and SOD1 knockdown (KD) HeLa cells using [KD Validated] SOD1 Rabbit mAb (A28901) at 1:2000 dilution incubated overnight at 4°C.
Secondary antibody: HRP-conjugated Goat anti-Rabbit IgG (H+L) (AS014) at 1:10000 dilution.
Lysates/proteins: 25 µg per lane.
Blocking buffer: 3% nonfat dry milk in TBST.
Detection: ECL Basic Kit (RM00020).
Exposure time: 1 s.

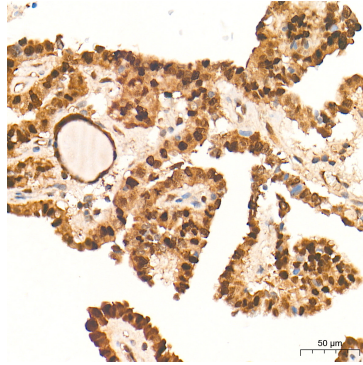


Western blot analysis of various lysates using [KD Validated] SOD1 Rabbit mAb (A28901) at 1:2000 dilution incubated overnight at 4°C.
Secondary antibody: HRP-conjugated Goat anti-Rabbit IgG (H+L) (AS014) at 1:10000 dilution.
Lysates/proteins: 25 µg per lane.
Blocking buffer: 3% nonfat dry milk in TBST.
Detection: ECL Basic Kit (RM00020).
Exposure time: 1 s.

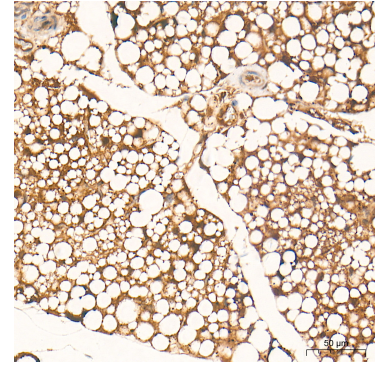
Validation Data



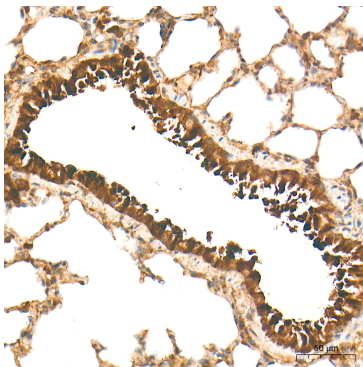
Immunohistochemistry analysis of paraffin-embedded Human breast cancer tissue using [KD Validated] SOD1 Rabbit mAb (A28901) at a dilution of 1:1600 (40x lens). High pressure antigen retrieval performed with 0.01M Tris-EDTA Buffer (pH 9.0) prior to IHC staining.



Immunohistochemistry analysis of paraffin-embedded Human thyroid cancer tissue using [KD Validated] SOD1 Rabbit mAb (A28901) at a dilution of 1:1600 (40x lens). High pressure antigen retrieval performed with 0.01M Tris-EDTA Buffer (pH 9.0) prior to IHC staining.



Immunohistochemistry analysis of paraffin-embedded Mouse fat tissue using [KD Validated] SOD1 Rabbit mAb (A28901) at a dilution of 1:1600 (40x lens). High pressure antigen retrieval performed with 0.01M Tris-EDTA Buffer (pH 9.0) prior to IHC staining.



Immunohistochemistry analysis of paraffin-embedded Rat lung tissue using [KD Validated] SOD1 Rabbit mAb (A28901) at a dilution of 1:1600 (40x lens). High pressure antigen retrieval performed with 0.01M Tris-EDTA Buffer (pH 9.0) prior to IHC staining.