

Aquaporin 3 Rabbit mAb

Catalog No.: A28910 **Recombinant**

Basic Information

Observed MW

25-35 kDa(glycosylated)/55-70 kDa(glycosylated dimer)

Calculated MW

32 kDa/30 kDa

Category

Primary antibody

Applications

WB,IP,IF/ICC,IF-F,IHC-P,ELISA

Cross-Reactivity

Human, Mouse, Rat

CloneNo number

ARC82430

Background

This gene encodes the water channel protein aquaporin 3. Aquaporins are a family of small integral membrane proteins related to the major intrinsic protein, also known as aquaporin 0. Aquaporin 3 is localized at the basal lateral membranes of collecting duct cells in the kidney. In addition to its water channel function, aquaporin 3 has been found to facilitate the transport of nonionic small solutes such as urea and glycerol, but to a smaller degree. It has been suggested that water channels can be functionally heterogeneous and possess water and solute permeation mechanisms. Alternative splicing of this gene results in multiple transcript variants encoding different isoforms.

Recommended Dilutions

WB 1:3000-1:100000

IP 0.5 µg - 4 µg antibody for
200 µg - 400 µg extracts
of whole cells

IF/ICC 1:200 - 1:1000

IF-F 1:200 - 1:1000

IHC-P 1:4000 - 1:16000

ELISA Recommended starting concentration is 1 µg/mL. Please optimize the concentration based on your specific assay requirements. For high-ratio antibody dilutions ($\geq 1:10000$) a sequential dilution method is strongly recommended to ensure measurement accuracy.

Immunogen Information

Gene ID

360

Swiss Prot

Q92482

Immunogen

Synthetic peptide. This information is considered to be commercially sensitive.

Synonyms

GIL; AQP-3; AQP3

Product Information

Source

Rabbit

Isotype

IgG

Purification

Affinity purification

Storage

Store at -20°C. Avoid freeze / thaw cycles.

Buffer: PBS with 0.09% Sodium azide, 0.05% BSA, 50% glycerol, pH7.3.

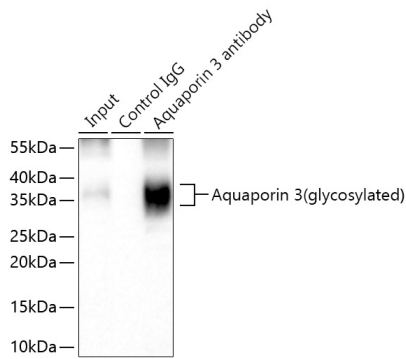
Contact

 | 400-999-6126

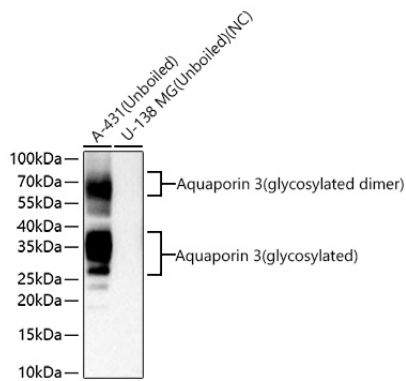
 | cn.market@abclonal.com.cn

 | www.abclonal.com.cn

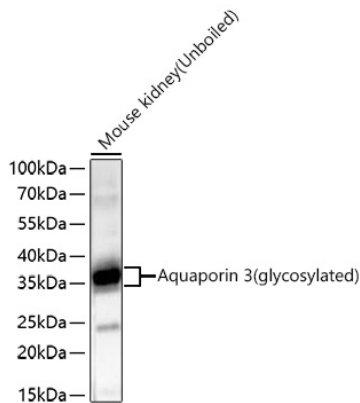
Validation Data



Immunoprecipitation of Aquaporin 3 from 300 µg extracts of BxPC-3 cells was performed using 2 µg of Aquaporin 3 Rabbit mAb (A28910). Rabbit Control IgG (AC005) was used to precipitate the Control IgG sample. IP samples were eluted with 1x Laemmli Buffer. The Input lane represents 10% of the total input. Western blot analysis of immunoprecipitates was conducted using Aquaporin 3 Rabbit mAb (A28910) at a dilution of 1:200000.

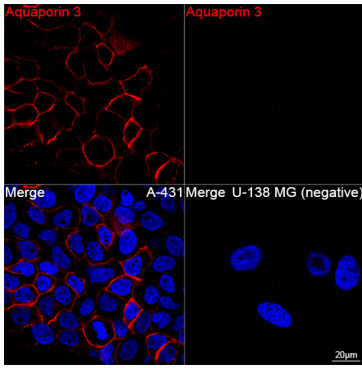


Western blot analysis of various lysates using Aquaporin 3 Rabbit mAb (A28910) at 1:20000 dilution incubated overnight at 4°C. Secondary antibody: HRP-conjugated Goat anti-Rabbit IgG (H+L) (AS014) at 1:10000 dilution. Lysates/proteins: 25 µg per lane. Blocking buffer: 3% nonfat dry milk in TBST. Detection: ECL Basic Kit (RM00020). Negative control (NC): U-138 MG. Exposure time: 5 s.

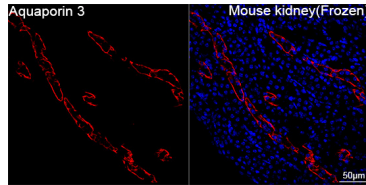


Western blot analysis of lysates from Mouse kidney using Aquaporin 3 Rabbit mAb (A28910) at 1:5000 dilution incubated overnight at 4°C. Secondary antibody: HRP-conjugated Goat anti-Rabbit IgG (H+L) (AS014) at 1:10000 dilution. Lysates/proteins: 25 µg per lane. Blocking buffer: 3% nonfat dry milk in TBST. Detection: ECL Basic Kit (RM00020). Exposure time: 60 s.

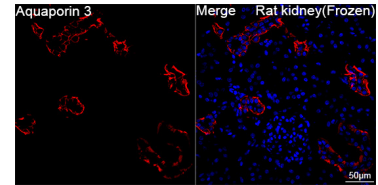
Validation Data



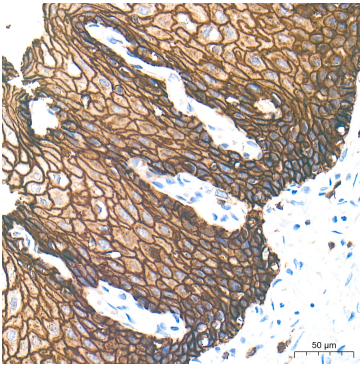
Confocal imaging of A-431 cells and U-138 MG cells (negative) using Aquaporin 3 Rabbit mAb (A28910, dilution 1:200) followed by a further incubation with Cy3-conjugated Goat anti-Rabbit IgG (H+L) (AS007, dilution 1:500) (Red). DAPI was used for nuclear staining (Blue). Objective: 100x.



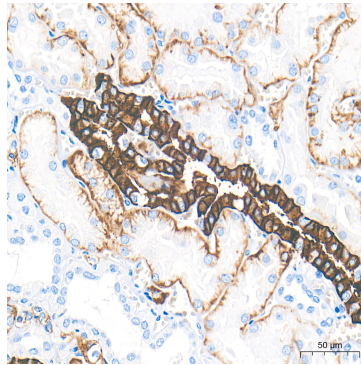
Confocal imaging of frozen sections of Mouse kidney tissue using Aquaporin 3 Rabbit mAb (A28910, dilution 1:200) followed by a further incubation with Cy3-conjugated Goat anti-Rabbit IgG (H+L) (AS007, dilution 1:500) (Red). DAPI was used for nuclear staining (Blue). Microwave antigen retrieval performed with 0.01M Citrate Buffer (pH 6.0) prior to IF staining. Objective: 40x.



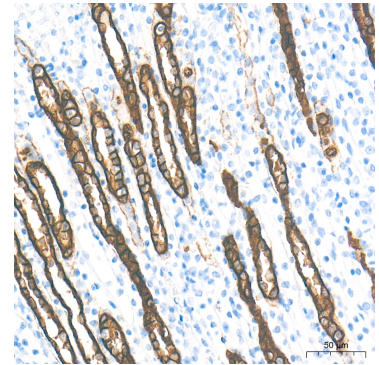
Confocal imaging of frozen sections of Rat kidney tissue using Aquaporin 3 Rabbit mAb (A28910, dilution 1:200) followed by a further incubation with Cy3-conjugated Goat anti-Rabbit IgG (H+L) (AS007, dilution 1:500) (Red). DAPI was used for nuclear staining (Blue). Microwave antigen retrieval performed with 0.01M Citrate Buffer (pH 6.0) prior to IF staining. Objective: 40x.



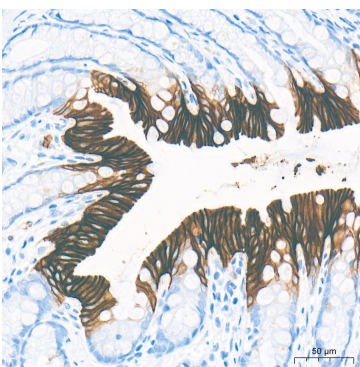
Immunohistochemistry analysis of paraffin-embedded Human esophagus tissue using Aquaporin 3 Rabbit mAb (A28910) at a dilution of 1:5000 (40x lens). High pressure antigen retrieval performed with 0.01M Tris-EDTA Buffer (pH 9.0) prior to IHC staining.



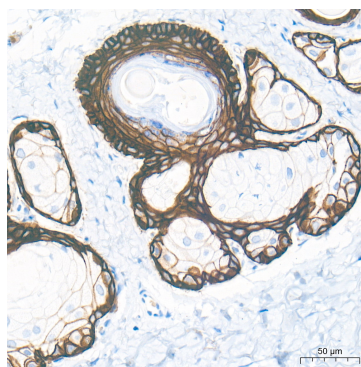
Immunohistochemistry analysis of paraffin-embedded Human kidney tissue using Aquaporin 3 Rabbit mAb (A28910) at a dilution of 1:5000 (40x lens). High pressure antigen retrieval performed with 0.01M Tris-EDTA Buffer (pH 9.0) prior to IHC staining.



Immunohistochemistry analysis of paraffin-embedded Mouse kidney tissue using Aquaporin 3 Rabbit mAb (A28910) at a dilution of 1:5000 (40x lens). High pressure antigen retrieval performed with 0.01M Tris-EDTA Buffer (pH 9.0) prior to IHC staining.



Immunohistochemistry analysis of paraffin-embedded Rat intestine tissue using Aquaporin 3 Rabbit mAb (A28910) at a dilution of 1:5000 (40x lens). High pressure antigen retrieval performed with 0.01M Tris-EDTA Buffer (pH 9.0) prior to IHC staining.



Immunohistochemistry analysis of paraffin-embedded Rat skin tissue using Aquaporin 3 Rabbit mAb (A28910) at a dilution of 1:5000 (40x lens). High pressure antigen retrieval performed with 0.01M Tris-EDTA Buffer (pH 9.0) prior to IHC staining.