

# ABflo® 450 Rabbit anti-Mouse IgG1 mAb

Catalog No.: A28917

## Basic Information

### Observed MW

### Calculated MW

### Category

Primary antibody

### Applications

FC

### Cross-Reactivity

Mouse

### CloneNo number

ARC63967

### Conjugate

ABflo® 450. Ex:406nm. Em:445nm.

## Background

Mouse IgG1 is a subtype of immunoglobulin G antibody that is produced by B cells in response to an antigen. It is the most abundant IgG subtype in the serum and plays a crucial role in the adaptive immune response. Mouse IgG1 is composed of two heavy chains and two light chains, and it is involved in opsonization, complement activation, and antibody-dependent cell-mediated cytotoxicity. It is also involved in the regulation of immune responses, including the activation of T cells and the inhibition of B cell activation. Mouse IgG1 is widely used in research and diagnostic applications, including ELISA, Western blotting, and immunohistochemistry. It is also used in therapeutic applications, such as immunotherapy and vaccine development.

## Recommended Dilutions

FC ≤0.25 µg per million cells  
in 100 µl volume

## Immunogen Information

### Gene ID

### Swiss Prot

P01868

### Immunogen

Recombinant protein (or fragment). This information is considered to be commercially sensitive.

### Synonyms

IgG1

## Contact

☎ | 400-999-6126

✉ | [cn.market@abclonal.com.cn](mailto:cn.market@abclonal.com.cn)

🌐 | [www.abclonal.com.cn](http://www.abclonal.com.cn)

## Product Information

### Source

Rabbit

### Isotype

IgG

### Purification

Affinity purification

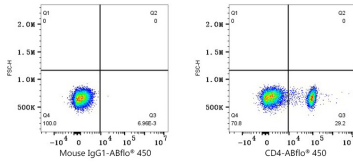
### Storage

Store at 2-8°C. Avoid freeze.

Buffer: PBS with 0.09% Sodium azide, 0.2% BSA, pH7.3.

## Validation Data

---



Flow cytometry:  $1 \times 10^6$  Human PBMC were surface-stained with Mouse IgG1 isotype control (0.5  $\mu$ g, left) or Mouse anti-Human CD4 Antibody (0.5  $\mu$ g, right), followed by ABflo® 450 Rabbit anti-Mouse IgG1 mAb (A28917, 0.25  $\mu$ g) staining. Cells in the lymphocyte gate were used for analysis.