

# [KO Validated] STAT1 Rabbit mAb

Catalog No.: A28923 **KO** **Validated** **Recombinant**

## Basic Information

### Observed MW

84 kDa/91 kDa

### Calculated MW

83 kDa/87 kDa

### Category

Primary antibody

### Applications

WB,IP,IF-F,ChIP,ELISA

### Cross-Reactivity

Human, Mouse

### CloneNo number

ARC78688

## Background

The protein encoded by this gene is a member of the STAT protein family. In response to cytokines and growth factors, STAT family members are phosphorylated by the receptor associated kinases, and then form homo- or heterodimers that translocate to the cell nucleus where they act as transcription activators. The protein encoded by this gene can be activated by various ligands including interferon-alpha, interferon-gamma, EGF, PDGF and IL6. This protein mediates the expression of a variety of genes, which is thought to be important for cell viability in response to different cell stimuli and pathogens. The protein plays an important role in immune responses to viral, fungal and mycobacterial pathogens. Mutations in this gene are associated with Immunodeficiency 31B, 31A, and 31C.

## Recommended Dilutions

**WB** 1:5000 - 1:20000

**IP** 0.5 µg - 4 µg antibody for  
200 µg - 400 µg extracts  
of whole cells

**IF-F** 1:200 - 1:1200

**ChIP** 0.5 µg antibody for 10  
µg-15 µg of Chromatin

**ELISA** Recommended starting  
concentration is 1 µg/mL.  
Please optimize the  
concentration based on  
your specific assay  
requirements. For high-  
ratio antibody dilutions  
(≥1:10000) a sequential  
dilution method is  
strongly recommended  
to ensure measurement  
accuracy.

## Immunogen Information

### Gene ID

6772

### Swiss Prot

P42224

### Immunogen

Synthetic peptide. This information is considered to be commercially sensitive.

### Synonyms

CANDF7; IMD31A; IMD31B; IMD31C; ISGF-3; STAT91

## Product Information

### Source

Rabbit

### Isotype

IgG

### Purification

Affinity purification

### Storage

Store at -20°C. Avoid freeze / thaw cycles.

Buffer: PBS with 0.09% Sodium azide,0.05% BSA,50% glycerol,pH7.3.

## Contact

---

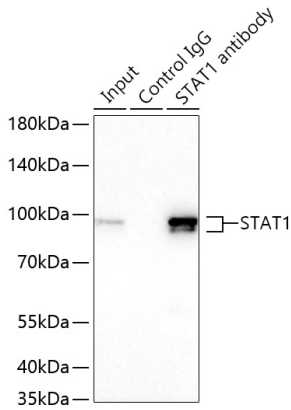
 | 400-999-6126

 | [cn.market@abclonal.com.cn](mailto:cn.market@abclonal.com.cn)

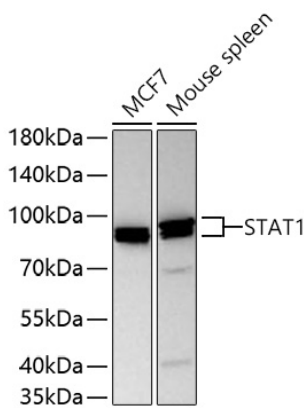
 | [www.abclonal.com.cn](http://www.abclonal.com.cn)

---

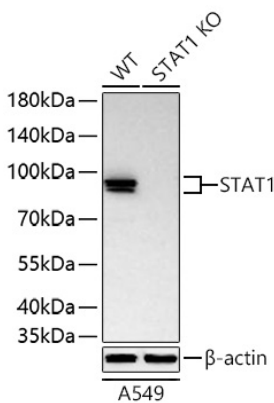
## Validation Data



Immunoprecipitation of STAT1 from 300  $\mu$ g extracts of A549 cells was performed using 0.5  $\mu$ g of [KO Validated] STAT1 Rabbit mAb (A28923). Rabbit Control IgG (AC005) was used to precipitate the Control IgG sample. IP samples were eluted with 1x Laemmli Buffer. The Input lane represents 10% of the total input. Western blot analysis of immunoprecipitates was conducted using [KO Validated] STAT1 Rabbit mAb (A28923) at a dilution of 1:5000.

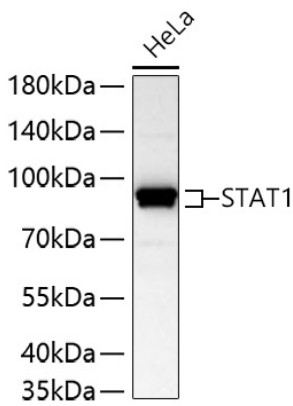


Western blot analysis of various lysates using [KO Validated] STAT1 Rabbit mAb (A28923) at 1:20000 dilution incubated overnight at 4°C. Secondary antibody: HRP-conjugated Goat anti-Rabbit IgG (H+L) (AS014) at 1:10000 dilution. Lysates/proteins: 25  $\mu$ g per lane. Blocking buffer: 3% nonfat dry milk in TBST. Detection: ECL Basic Kit (RM00020). Exposure time: 45 s.

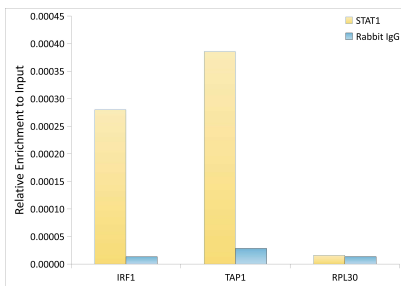


Western blot analysis of lysates from wild type (WT) and STAT1 knockout (KO) A549 cells using [KO Validated] STAT1 Rabbit mAb (A28923) at 1:20000 dilution incubated overnight at 4°C. Secondary antibody: HRP-conjugated Goat anti-Rabbit IgG (H+L) (AS014) at 1:10000 dilution. Lysates/proteins: 25  $\mu$ g per lane. Blocking buffer: 3% nonfat dry milk in TBST. Detection: ECL Basic Kit (RM00020). Exposure time: 90 s.

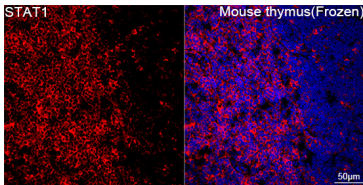
## Validation Data



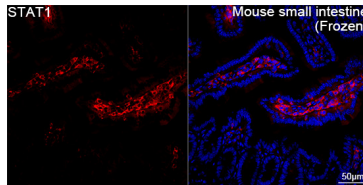
Western blot analysis of lysates from HeLa cells using [KO Validated] STAT1 Rabbit mAb (A28923) at 1:20000 dilution incubated overnight at 4°C.  
 Secondary antibody: HRP-conjugated Goat anti-Rabbit IgG (H+L) (AS014) at 1:10000 dilution.  
 Lysates/proteins: 25 µg per lane.  
 Blocking buffer: 3% nonfat dry milk in TBST.  
 Detection: ECL Basic Kit (RM00020).  
 Exposure time: 90 s.



Chromatin immunoprecipitation was performed with 15 µg of cross-linked chromatin from RAW 264.7 cells were treated with IFN-γ(100 ng/mL, 18 h), using 0.5 µg of [KO Validated] STAT1 Rabbit mAb(A28923) and Rabbit IgG isotype control (AC042). The enrichment of immunoprecipitated DNA at different genomic loci was examined by quantitative PCR. The histogram compares the ratio of the immunoprecipitated DNA to the input at given loci.



Confocal imaging of frozen sections of Mouse thymus tissue using [KO Validated] STAT1 Rabbit mAb (A28923, dilution 1:600) followed by a further incubation with Cy3-conjugated Goat anti-Rabbit IgG (H+L) (AS007, dilution 1:500) (Red). DAPI was used for nuclear staining (Blue). Microwave antigen retrieval performed with 0.01M Citrate Buffer (pH 6.0) prior to IF staining. Objective: 40x.



Confocal imaging of frozen sections of Mouse small intestine tissue using [KO Validated] STAT1 Rabbit mAb (A28923, dilution 1:600) followed by a further incubation with Cy3-conjugated Goat anti-Rabbit IgG (H+L) (AS007, dilution 1:500) (Red). DAPI was used for nuclear staining (Blue). Microwave antigen retrieval performed with 0.01M Citrate Buffer (pH 6.0) prior to IF staining. Objective: 40x.