

# TFAM Rabbit mAb

Catalog No.: A28933 **Recombinant**

## Basic Information

### Observed MW

24 kDa

### Calculated MW

25 kDa/28 kDa

### Category

Primary antibody

### Applications

WB,IP,IF/ICC,IF-F,IHC-P,ELISA

### Cross-Reactivity

Mouse, Rat

### CloneNo number

ARC79284

## Background

Enables mitochondrial promoter sequence-specific DNA binding activity. Involved in mitochondrial transcription. Acts upstream of or within mitochondrial respiratory chain complex assembly. Located in mitochondrial nucleoid. Is active in mitochondrion. Is expressed in several structures, including brain; branchial arch; genitourinary system; limb; and pancreas. Used to study Kearns-Sayre syndrome and Parkinson's disease. Human ortholog(s) of this gene implicated in Alzheimer's disease; Huntington's disease; Parkinson's disease; amyotrophic lateral sclerosis; and mitochondrial DNA depletion syndrome 15. Orthologous to human TFAM (transcription factor A, mitochondrial).

## Recommended Dilutions

**WB** 1:2000 - 1:10000

**IP** 0.5 µg - 4 µg antibody for  
400 µg - 600 µg extracts  
of whole cells

**IF/ICC** 1:100 - 1:400

**IF-F** 1:100 - 1:1000

**IHC-P** 1:1000 - 1:4000

**ELISA** Recommended starting concentration is 1 µg/mL. Please optimize the concentration based on your specific assay requirements. For high-ratio antibody dilutions ( $\geq 1:10000$ ) a sequential dilution method is strongly recommended to ensure measurement accuracy.

## Immunogen Information

### Gene ID

21780

### Swiss Prot

P40630

### Immunogen

Recombinant protein (or fragment). This information is considered to be commercially sensitive.

### Synonyms

Hmgts; mtTFA; tsHMG

## Product Information

### Source

Rabbit

### Isotype

IgG

### Purification

Affinity purification

### Storage

Store at -20°C. Avoid freeze / thaw cycles.

Buffer: PBS with 0.09% Sodium azide, 0.05% BSA, 50% glycerol, pH7.3.

## Contact

---

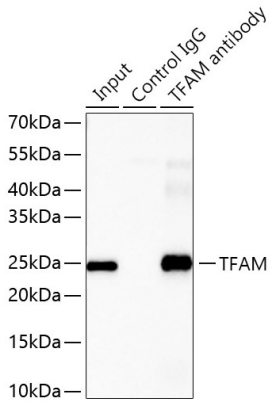
 | 400-999-6126

 | [cn.market@abclonal.com.cn](mailto:cn.market@abclonal.com.cn)

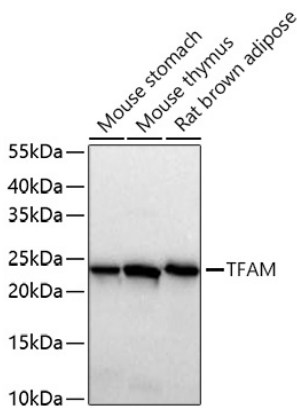
 | [www.abclonal.com.cn](http://www.abclonal.com.cn)

---

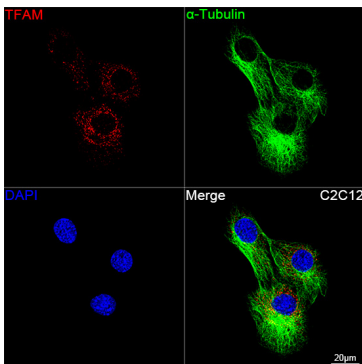
## Validation Data



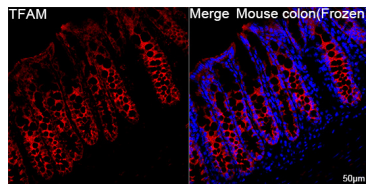
Immunoprecipitation of TFAM from 600 µg extracts of Mouse brown adipose tissue was performed using 2 µg of TFAM Rabbit mAb (A28933). Rabbit Control IgG (AC005) was used to precipitate the Control IgG sample. IP samples were eluted with 1x Laemmli Buffer. The Input lane represents 10% of the total input. Western blot analysis of immunoprecipitates was conducted using TFAM Rabbit mAb (A28933) at a dilution of 1:5000.



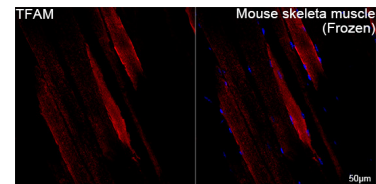
Western blot analysis of various lysates using TFAM Rabbit mAb (A28933) at 1:5000 dilution incubated at room temperature for 1.5 hours. Secondary antibody: HRP-conjugated Goat anti-Rabbit IgG (H+L) (AS014) at 1:10000 dilution. Lysates/proteins: 25 µg per lane. Blocking buffer: 3% nonfat dry milk in TBST. Detection: ECL Basic Kit (RM00020). Exposure time: 20 s.



Confocal imaging of C2C12 cells using TFAM Rabbit mAb (A28933, dilution 1:200) followed by a further incubation with Cy3-conjugated Goat anti-Rabbit IgG (H+L) (AS007, dilution 1:500) (Red). The cells were counterstained with α-Tubulin Mouse mAb (AC012, dilution 1:400) followed by incubation with ABflo® 488-conjugated Goat Anti-Mouse IgG (H+L) Ab (AS076, dilution 1:500) (Green). DAPI was used for nuclear staining (Blue). Objective: 100x.



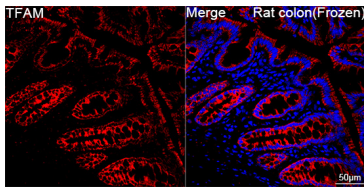
Confocal imaging of frozen sections of Mouse colon tissue using TFAM Rabbit mAb (A28933, dilution 1:200) followed by a further incubation with Cy3-conjugated Goat anti-Rabbit IgG (H+L) (AS007, dilution 1:500) (Red). DAPI was used for nuclear staining (Blue). Microwave antigen retrieval performed with 0.01M Citrate Buffer (pH 6.0) prior to IF staining. Objective: 40x.



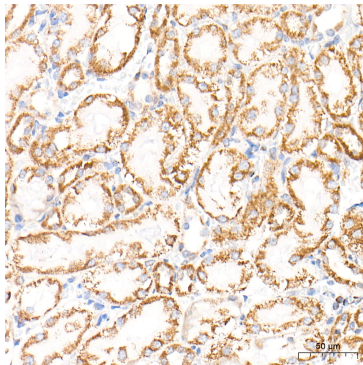
Confocal imaging of frozen sections of Mouse skeletal muscle tissue using TFAM Rabbit mAb (A28933, dilution 1:200) followed by a further incubation with Cy3-conjugated Goat anti-Rabbit IgG (H+L) (AS007, dilution 1:500) (Red). DAPI was used for nuclear staining (Blue). Microwave antigen retrieval performed with 0.01M Citrate Buffer (pH 6.0) prior to IF staining. Objective: 40x.

## Validation Data

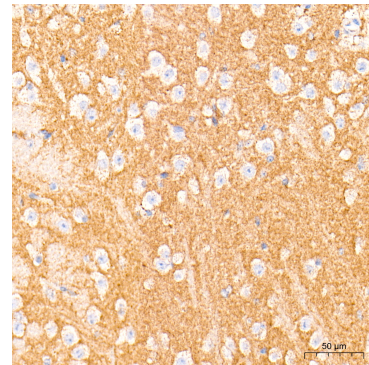
---



Confocal imaging of frozen sections of Rat colon tissue using TFAM Rabbit mAb (A28933, dilution 1:200) followed by a further incubation with Cy3-conjugated Goat anti-Rabbit IgG (H+L) (AS007, dilution 1:500) (Red). DAPI was used for nuclear staining (Blue). Microwave antigen retrieval performed with 0.01M Citrate Buffer (pH 6.0) prior to IF staining. Objective: 40x.



Immunohistochemistry analysis of paraffin-embedded Rat kidney tissue using TFAM Rabbit mAb (A28933) at a dilution of 1:4000 (40x lens). High pressure antigen retrieval performed with 0.01M Tris-EDTA Buffer (pH 9.0) prior to IHC staining.



Immunohistochemistry analysis of paraffin-embedded Mouse brain tissue using TFAM Rabbit mAb (A28933) at a dilution of 1:4000 (40x lens). High pressure antigen retrieval performed with 0.01M Tris-EDTA Buffer (pH 9.0) prior to IHC staining.