

CYP1B1 Rabbit mAb

Catalog No.: A28934 **Recombinant**

Basic Information

Observed MW

57 kDa

Calculated MW

61 kDa

Category

Primary antibody

Applications

WB,IF/ICC,IF-F,IHC-P,ELISA

Cross-Reactivity

Mouse

CloneNo number

ARC83142

Background

Enables oxidoreductase activity, acting on paired donors, with incorporation or reduction of molecular oxygen, reduced flavin or flavoprotein as one donor, and incorporation of one atom of oxygen. Involved in several processes, including camera-type eye development; regulation of gene expression; and retinoid metabolic process. Acts upstream of or within several processes, including blood vessel endothelial cell migration; endothelial cell-cell adhesion; and vasculature development. Located in mitochondrion. Is expressed in several structures, including alimentary system; central nervous system; genitourinary system; musculature; and sensory organ. Used to study buphthalmos. Human ortholog(s) of this gene implicated in Peters anomaly; anterior segment dysgenesis 6; breast cancer; glaucoma (multiple); and lung squamous cell carcinoma. Orthologous to human CYP1B1 (cytochrome P450 family 1 subfamily B member 1)

Recommended Dilutions

WB 1:3000 - 1:5000

IF/ICC 1:200 - 1:800

IF-F 1:200 - 1:800

IHC-P 1:200 - 1:800

ELISA Recommended starting concentration is 1 µg/mL. Please optimize the concentration based on your specific assay requirements. For high-ratio antibody dilutions ($\geq 1:10000$) a sequential dilution method is strongly recommended to ensure measurement accuracy.

Immunogen Information

Gene ID

13078

Swiss Prot

Q64429

Immunogen

Recombinant protein (or fragment). This information is considered to be commercially sensitive.

Synonyms

CP1B; CYP1B1; P4501b1

Product Information

Source

Rabbit

Isotype

IgG

Purification

Affinity purification

Storage

Store at -20°C. Avoid freeze / thaw cycles.

Buffer: PBS with 0.09% sodium azide, 0.05% BSA, 50% glycerol, pH7.3

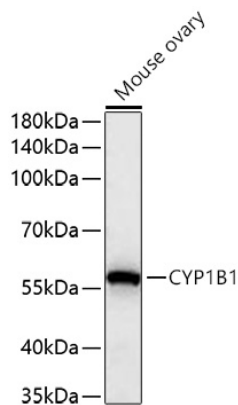
Contact

 | 400-999-6126

 | cn.market@abclonal.com.cn

 | www.abclonal.com.cn

Validation Data



Western blot analysis of lysates from Mouse ovary using CYP1B1 Rabbit mAb (A28934) at 1:5000 dilution incubated overnight at 4°C.

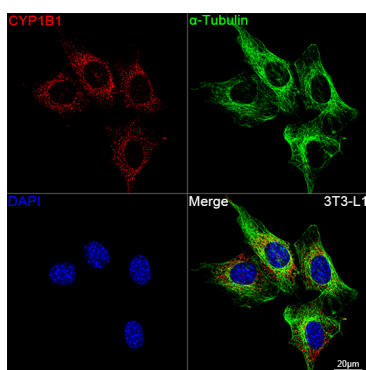
Secondary antibody: HRP-conjugated Goat anti-Rabbit IgG (H+L) (AS014) at 1:10000 dilution.

Lysates/proteins: 25 µg per lane.

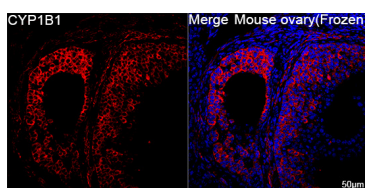
Blocking buffer: 3% nonfat dry milk in TBST.

Detection: ECL Basic Kit (RM00020).

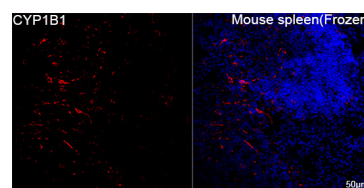
Exposure time: 45 s.



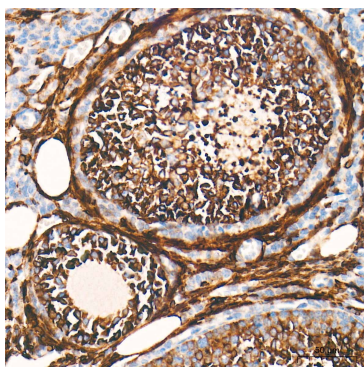
Confocal imaging of 3T3-L1 cells using CYP1B1 Rabbit mAb (A28934, dilution 1:200) followed by a further incubation with Cy3-conjugated Goat anti-Rabbit IgG (H+L) (AS007, dilution 1:500) (Red). The cells were counterstained with α -Tubulin Mouse mAb (AC012, dilution 1:400) followed by incubation with ABflo® 488-conjugated Goat Anti-Mouse IgG (H+L) Ab (AS076, dilution 1:500) (Green). DAPI was used for nuclear staining (Blue). Objective: 100x.



Confocal imaging of frozen sections of Mouse ovary tissue using CYP1B1 Rabbit mAb (A28934, dilution 1:200) followed by a further incubation with Cy3-conjugated Goat anti-Rabbit IgG (H+L) (AS007, dilution 1:500) (Red). DAPI was used for nuclear staining (Blue). Microwave antigen retrieval performed with 0.01M Citrate Buffer (pH 6.0) prior to IF staining. Objective: 40x.



Confocal imaging of frozen sections of Mouse spleen tissue using CYP1B1 Rabbit mAb (A28934, dilution 1:200) followed by a further incubation with Cy3-conjugated Goat anti-Rabbit IgG (H+L) (AS007, dilution 1:500) (Red). DAPI was used for nuclear staining (Blue). Microwave antigen retrieval performed with 0.01M Citrate Buffer (pH 6.0) prior to IF staining. Objective: 40x.



Immunohistochemistry analysis of paraffin-embedded Mouse ovary tissue using CYP1B1 Rabbit mAb (A28934) at a dilution of 1:200 (40x lens). High pressure antigen retrieval performed with 0.01M Tris-EDTA Buffer (pH 9.0) prior to IHC staining.