

CD133 Rabbit mAb

Catalog No.: A28967 **Recombinant**

Basic Information

Observed MW

133 kDa

Calculated MW

93-97 kDa

Category

Primary antibody

Applications

WB,IHC-P,ELISA

Cross-Reactivity

Human

CloneNo number

ARC3564

Background

This gene encodes a pentaspan transmembrane glycoprotein. The protein localizes to membrane protrusions and is often expressed on adult stem cells, where it is thought to function in maintaining stem cell properties by suppressing differentiation. Mutations in this gene have been shown to result in retinitis pigmentosa and Stargardt disease. Expression of this gene is also associated with several types of cancer. This gene is expressed from at least five alternative promoters that are expressed in a tissue-dependent manner. Multiple transcript variants encoding different isoforms have been found for this gene.

Recommended Dilutions

WB 1:4000 - 1:10000

IHC-P 1:500 - 1:2000

ELISA Recommended starting concentration is 1 µg/mL. Please optimize the concentration based on your specific assay requirements. For high-ratio antibody dilutions ($\geq 1:10000$) a sequential dilution method is strongly recommended to ensure measurement accuracy.

Immunogen Information

Gene ID

8842

Swiss Prot

O43490

Immunogen

This information is considered to be commercially sensitive.

Synonyms

RP41; AC133; CD133; MCDR2; STGD4; CORD12; PROML1; MSTP061

Product Information

Source

Rabbit

Isotype

IgG

Purification

Affinity purification

Storage

Store at -20°C. Avoid freeze / thaw cycles.

Buffer: PBS with 0.09% sodium azide, 0.05% BSA, 50% glycerol, pH 7.3

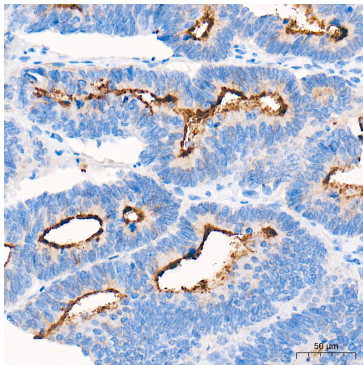
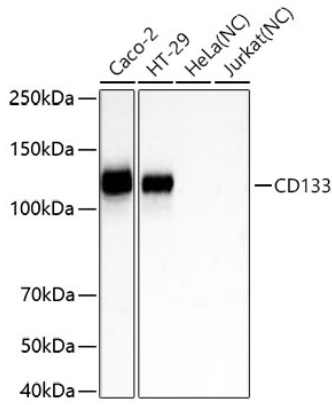
Contact

☎ | 400-999-6126

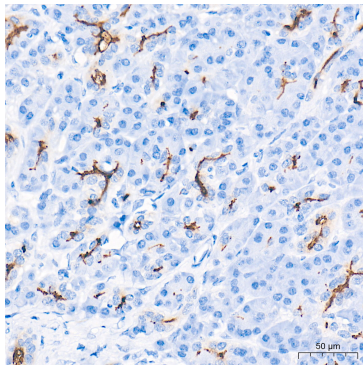
✉ | cn.market@abclonal.com.cn

🌐 | www.abclonal.com.cn

Validation Data



Immunohistochemistry analysis of paraffin-embedded Human colon carcinoma tissue using CD133 Rabbit mAb (A28967) at a dilution of 1:1800 (40x lens). High pressure antigen retrieval performed with 0.01M Tris-EDTA Buffer (pH 9.0) prior to IHC staining.



Immunohistochemistry analysis of paraffin-embedded Human pancreas tissue using CD133 Rabbit mAb (A28967) at a dilution of 1:1800 (40x lens). High pressure antigen retrieval performed with 0.01M Tris-EDTA Buffer (pH 9.0) prior to IHC staining.