

Aromatase Rabbit mAb

Catalog No.: A28993 **Recombinant**

Basic Information

Observed MW

Calculated MW

25 kDa/58 kDa

Category

Primary antibody

Applications

IF-P, IHC-P, ELISA

Cross-Reactivity

Human

CloneNo number

ARC79461

Background

This gene encodes a member of the cytochrome P450 superfamily of enzymes. The cytochrome P450 proteins are monooxygenases which catalyze many reactions involved in drug metabolism and synthesis of cholesterol, steroids and other lipids. This protein localizes to the endoplasmic reticulum and catalyzes the last steps of estrogen biosynthesis. Mutations in this gene can result in either increased or decreased aromatase activity; the associated phenotypes suggest that estrogen functions both as a sex steroid hormone and in growth or differentiation. Alternative promoter use and alternative splicing results in multiple transcript variants that have different tissue specificities.

Recommended Dilutions

IF-P 1:200 - 1:1000

IHC-P 1:2000 - 1:8000

ELISA

Recommended starting concentration is 1 µg/mL. Please optimize the concentration based on your specific assay requirements. For high-ratio antibody dilutions ($\geq 1:10000$) a sequential dilution method is strongly recommended to ensure measurement accuracy.

Immunogen Information

Gene ID

1588

Swiss Prot

P11511

Immunogen

Recombinant protein (or fragment). This information is considered to be commercially sensitive.

Synonyms

ARO; ARO1; CPV1; CYAR; CYP19; CYPXIX; P-450AROM

Product Information

Source

Human

Isotype

IgG

Purification

Affinity purification

Storage

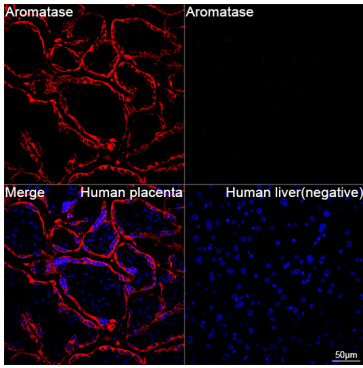
Store at -20°C. Avoid freeze / thaw cycles.

Buffer: PBS with 0.09% Sodium azide, 0.05% BSA, 50% glycerol, pH7.3.

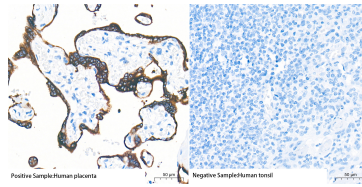
Contact

 | 400-999-6126 | cn.market@abclonal.com.cn | www.abclonal.com.cn

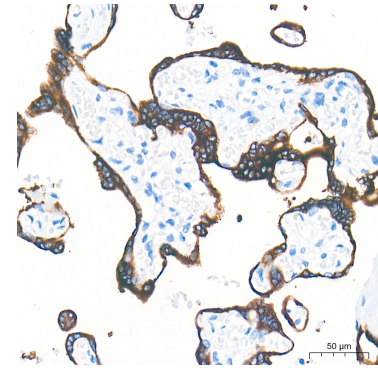
Validation Data



Confocal imaging of paraffin-embedded Human placenta tissue and Human liver tissue (negative) using Aromatase Rabbit mAb (A28993, dilution 1:200) followed by a further incubation with Cy3-conjugated Goat anti-Rabbit IgG (H+L) (AS007, dilution 1:500) (Red). DAPI was used for nuclear staining (Blue). High pressure antigen retrieval performed with 0.01M Citrate Buffer (pH 6.0) prior to IF staining. Objective: 40x.



Immunohistochemistry analysis of paraffin-embedded Human placenta tissue (left, Positive control) and Human tonsil tissue (right, Negative control), using Aromatase Rabbit mAb (A28993) at a dilution of 1:5000 (40x lens). High pressure antigen retrieval performed with 0.01M Tris-EDTA Buffer (pH 9.0) prior to IHC staining.



Immunohistochemistry analysis of paraffin-embedded Human placenta tissue using Aromatase Rabbit mAb (A28993) at a dilution of 1:5000 (40x lens). High pressure antigen retrieval performed with 0.01M Tris-EDTA Buffer (pH 9.0) prior to IHC staining.