

SLC1A6 Rabbit pAb

Catalog No.: A2904

Basic Information

Observed MW

64kDa

Calculated MW

62kDa

Category

Primary antibody

Applications

ELISA, WB

Cross-Reactivity

Human, Mouse

Background

Predicted to enable high-affinity glutamate transmembrane transporter activity. Involved in neurotransmitter uptake. Located in intermediate filament cytoskeleton and plasma membrane.

Recommended Dilutions

WB 1:500 - 1:1000

Immunogen Information

Gene ID

6511

Swiss Prot

P48664

Immunogen

Recombinant fusion protein containing a sequence corresponding to amino acids 155-265 of human SLC1A6 (NP_001259016.1).

Synonyms

EAAT4; SLC1A6

Contact

☎ | 400-999-6126

✉ | cn.market@abclonal.com.cn

🌐 | www.abclonal.com.cn

Product Information

Source

Rabbit

Isotype

IgG

Purification

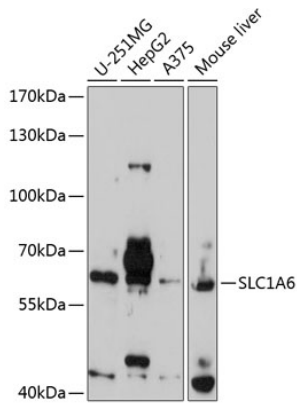
Affinity purification

Storage

Store at -20°C. Avoid freeze / thaw cycles.

Buffer: PBS with 0.02% sodium azide, 50% glycerol, pH7.3.

Validation Data



Western blot analysis of extracts of various cell lines, using SLC1A6 antibody (A2904) at 1:1000 dilution.
Secondary antibody: HRP Goat Anti-Rabbit IgG (H+L) (AS014) at 1:10000 dilution.
Lysates/proteins: 25µg per lane.
Blocking buffer: 3% nonfat dry milk in TBST.
Detection: ECL Basic Kit (RM00020).
Exposure time: 90s.