

# ENPP7 Rabbit pAb

Catalog No.: A2912

## Basic Information

### Observed MW

51kDa

### Calculated MW

51kDa

### Category

Primary antibody

### Applications

ELISA, WB

### Cross-Reactivity

Human

## Background

The protein encoded by this gene is an intestinal alkaline sphingomyelin phosphodiesterase that converts sphingomyelin to ceramide and phosphocholine. The encoded protein is anchored in the cell membrane, and it may function to protect the intestinal mucosa from inflammation and tumorigenesis. This protein is glycosylated and also exhibits lysophosphatidylcholine hydrolase activity.

## Recommended Dilutions

WB 1:500 - 1:2000

## Immunogen Information

### Gene ID

339221

### Swiss Prot

Q6UWV6

### Immunogen

A synthetic peptide corresponding to a sequence within amino acids 250-350 of human ENPP7 (Q6UWV6).

### Synonyms

NPP7; NPP-7; E-NPP 7; ALK-SMase; ENPP7

## Contact

☎ | 400-999-6126

✉ | [cn.market@abclonal.com.cn](mailto:cn.market@abclonal.com.cn)

🌐 | [www.abclonal.com.cn](http://www.abclonal.com.cn)

## Product Information

### Source

Rabbit

### Isotype

IgG

### Purification

Affinity purification

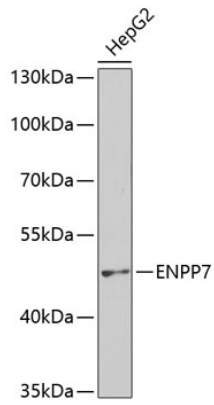
### Storage

Store at -20°C. Avoid freeze / thaw cycles.

Buffer: PBS with 0.02% sodium azide, 50% glycerol, pH7.3.

## Validation Data

---



Western blot analysis of extracts of HepG2 cells, using ENPP7 antibody (A2912) at 1:400 dilution.  
Secondary antibody: HRP Goat Anti-Rabbit IgG (H+L) (AS014) at 1:10000 dilution.  
Lysates/proteins: 25µg per lane.  
Blocking buffer: 3% nonfat dry milk in TBST.  
Detection: ECL Basic Kit (RM00020).  
Exposure time: 90s.