

# PGE receptor EP2 (PTGER2) Rabbit pAb

Catalog No.: A2914

1 Publications

## Basic Information

### Observed MW

40kDa

### Calculated MW

40kDa

### Category

Primary antibody

### Applications

ELISA, WB, IHC-P, IF/ICC

### Cross-Reactivity

Human, Mouse, Rat

## Background

This gene encodes a receptor for prostaglandin E2, a metabolite of arachidonic acid which has different biologic activities in a wide range of tissues. Mutations in this gene are associated with aspirin-induced susceptibility to asthma.

## Recommended Dilutions

WB	1:500 - 1:2000
IHC-P	1:50 - 1:200
IF/ICC	1:100 - 1:200

## Immunogen Information

### Gene ID

5732

### Swiss Prot

P43116

### Immunogen

A synthetic peptide corresponding to a sequence within amino acids 1-100 of human PGE receptor EP2 (PTGER2) (NP\_000947.2).

### Synonyms

EP2; PGE receptor EP2 (PTGER2)

## Contact

☎ | 400-999-6126

✉ | [cn.market@abclonal.com.cn](mailto:cn.market@abclonal.com.cn)

🌐 | [www.abclonal.com.cn](http://www.abclonal.com.cn)

## Product Information

### Source

Rabbit

### Isotype

IgG

### Purification

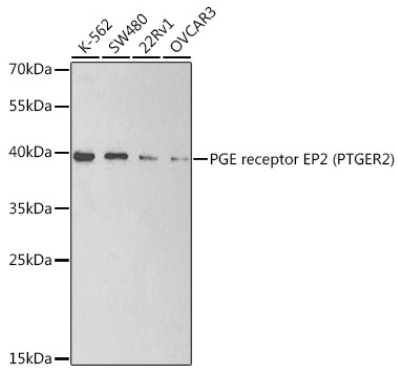
Affinity purification

### Storage

Store at -20°C. Avoid freeze / thaw cycles.

Buffer: PBS with 0.01% thimerosal, 50% glycerol, pH7.3.

## Validation Data



Western blot analysis of various lysates using PGE receptor EP2 (PTGER2) Rabbit pAb (A2914) at 1:200 dilution.

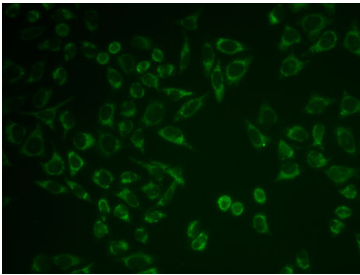
Secondary antibody: HRP Goat Anti-Rabbit IgG (H+L) (AS014) at 1:10000 dilution.

Lysates/proteins: 25µg per lane.

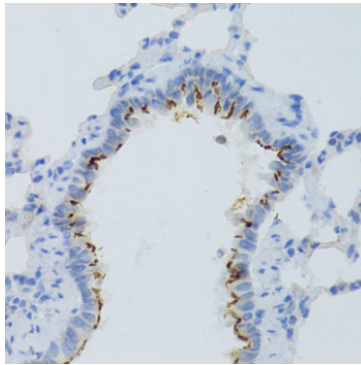
Blocking buffer: 3% nonfat dry milk in TBST.

Detection: ECL Basic Kit (RM00020).

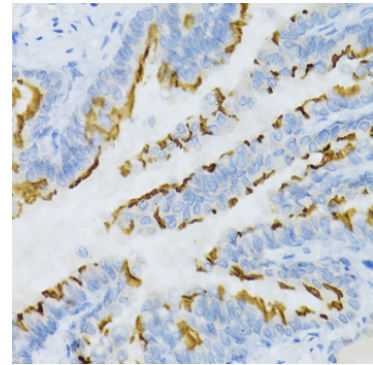
Exposure time: 90s.



Immunofluorescence analysis of HeLa cells using PGE receptor EP2 (PTGER2) Rabbit pAb (A2914). Secondary antibody: Cy3 Goat Anti-Rabbit IgG (H+L) (AS007) at 1:500 dilution.



Immunohistochemistry analysis of paraffin-embedded rat lung using PGE Receptor EP2 (PGE Receptor EP2 (PGE receptor EP2 (PTGER2))) Antibody (A2914) at dilution of 1:100 (40x lens). Perform microwave antigen retrieval with 10 mM PBS buffer pH 7.2 before commencing with IHC staining protocol.



Immunohistochemistry analysis of paraffin-embedded mouse lung using PGE Receptor EP2 (PGE Receptor EP2 (PGE receptor EP2 (PTGER2))) Antibody (A2914) at dilution of 1:100 (40x lens). Perform microwave antigen retrieval with 10 mM PBS buffer pH 7.2 before commencing with IHC staining protocol.