

# DUSP1/MKP1 Rabbit pAb

Catalog No.: A2919 **8 Publications**

## Basic Information

### Observed MW

40kDa

### Calculated MW

39kDa

### Category

Primary antibody

### Applications

WB, ELISA

### Cross-Reactivity

Human, Mouse, Rat

## Background

The protein encoded by this gene is a phosphatase with dual specificity for tyrosine and threonine. The encoded protein can dephosphorylate MAP kinase MAPK1/ERK2, which results in its involvement in several cellular processes. This protein appears to play an important role in the human cellular response to environmental stress as well as in the negative regulation of cellular proliferation. Finally, the encoded protein can make some solid tumors resistant to both chemotherapy and radiotherapy, making it a target for cancer therapy.

## Recommended Dilutions

**WB** 1:100 - 1:500

**ELISA** Recommended starting concentration is 1 µg/mL. Please optimize the concentration based on your specific assay requirements.

## Immunogen Information

### Gene ID

1843

### Swiss Prot

P28562

### Immunogen

Recombinant fusion protein containing a sequence corresponding to amino acids 1-160 of human DUSP1/MKP1 (NP\_004408.1).

### Synonyms

HVH1; MKP1; CL100; MKP-1; PTPN10; DUSP1/MKP1

## Contact

☎ | 400-999-6126

✉ | [cn.market@abclonal.com.cn](mailto:cn.market@abclonal.com.cn)

🌐 | [www.abclonal.com.cn](http://www.abclonal.com.cn)

## Product Information

### Source

Rabbit

### Isotype

IgG

### Purification

Affinity purification

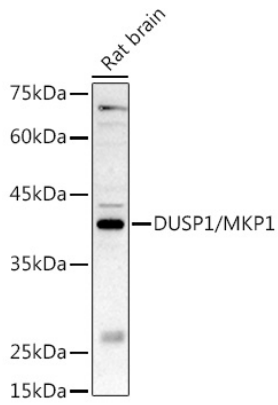
### Storage

Store at -20°C. Avoid freeze / thaw cycles.

Buffer: PBS with 0.09% Sodium azide, 50% glycerol, pH7.3.

## Validation Data

---



Western blot analysis of lysates from Rat brain, using DUSP1/MKP1 Rabbit pAb (A2919) at 1:500 dilution.  
Secondary antibody: HRP-conjugated Goat anti-Rabbit IgG (H+L) (AS014) at 1:10000 dilution.  
Lysates/proteins: 25 $\mu$ g per lane.  
Blocking buffer: 3% nonfat dry milk in TBST.  
Detection: ECL Basic Kit (RM00020).  
Exposure time: 180s.