

CMTM3 Rabbit pAb

Catalog No.: A2943

Basic Information

Observed MW

20kDa

Calculated MW

20kDa

Category

Primary antibody

Applications

WB

Cross-Reactivity

Human, Mouse

Background

This gene belongs to the chemokine-like factor gene superfamily, a novel family that is similar to the chemokine and the transmembrane 4 superfamilies of signaling molecules. This gene is one of several chemokine-like factor genes located in a cluster on chromosome 16. Alternatively spliced transcript variants containing different 5' UTRs, but encoding the same protein, have been identified.

Recommended Dilutions

WB 1:500 - 1:1000

Immunogen Information

Gene ID

123920

Swiss Prot

Q96MX0

Immunogen

A synthetic peptide corresponding to a sequence within amino acids 100-182 of human CMTM3 (NP_653202.1).

Synonyms

BNAS2; CKLFSF3; CMTM3

Contact

☎ | 400-999-6126

✉ | cn.market@abclonal.com.cn

🌐 | www.abclonal.com.cn

Product Information

Source

Rabbit

Isotype

IgG

Purification

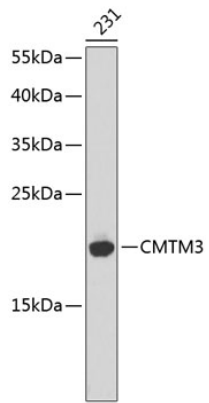
Affinity purification

Storage

Store at -20°C. Avoid freeze / thaw cycles.

Buffer: PBS with 0.02% sodium azide, 50% glycerol, pH7.3.

Validation Data



Western blot analysis of lysates from 231 cells, using CMTM3 Rabbit pAb (A2943).
Secondary antibody: HRP Goat Anti-Rabbit IgG (H+L) (AS014) at 1:10000 dilution.
Lysates/proteins: 25µg per lane.
Blocking buffer: 3% nonfat dry milk in TBST.