

CLDND1 Rabbit pAb

Catalog No.: A2945

Basic Information

Observed MW

29kDa

Calculated MW

29kDa

Category

Primary antibody

Applications

ELISA, WB

Cross-Reactivity

Mouse, Rat

Background

Located in cell surface.

Recommended Dilutions

WB 1:500 - 1:1000

Immunogen Information

Gene ID

56650

Swiss Prot

Q9NY35

Immunogen

Recombinant fusion protein containing a sequence corresponding to amino acids 28-138 of human CLDND1 (Q9NY35).

Synonyms

Z38; C3orf4; GENX-3745; CLDND1

Contact

 | 400-999-6126

 | cn.market@abclonal.com.cn

 | www.abclonal.com.cn

Product Information

Source

Rabbit

Isotype

IgG

Purification

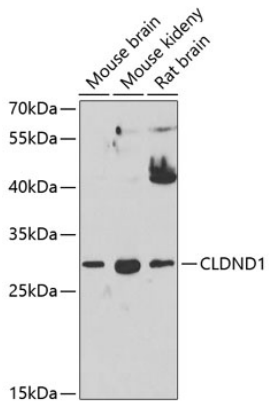
Affinity purification

Storage

Store at -20°C. Avoid freeze / thaw cycles.

Buffer: PBS with 0.02% sodium azide, 50% glycerol, pH7.3.

Validation Data



Western blot analysis of various lysates using CLDND1 Rabbit pAb (A2945) at 1:1000 dilution.
Secondary antibody: HRP Goat Anti-Rabbit IgG (H+L) (AS014) at 1:10000 dilution.
Lysates/proteins: 25µg per lane.
Blocking buffer: 3% nonfat dry milk in TBST.
Detection: ECL Basic Kit (RM00020).
Exposure time: 90s.