

# CLDN4 Rabbit pAb

Catalog No.: A2947 **2 Publications**

## Basic Information

### Observed MW

22kDa

### Calculated MW

22kDa

### Category

Primary antibody

### Applications

WB,ELISA

### Cross-Reactivity

Human

## Background

The protein encoded by this intronless gene belongs to the claudin family. Claudins are integral membrane proteins that are components of the epithelial cell tight junctions, which regulate movement of solutes and ions through the paracellular space. This protein is a high-affinity receptor for Clostridium perfringens enterotoxin (CPE) and may play a role in internal organ development and function during pre- and postnatal life. This gene is deleted in Williams-Beuren syndrome, a neurodevelopmental disorder affecting multiple systems.

## Recommended Dilutions

**WB** 1:500 - 1:2000

**ELISA** Recommended starting concentration is 1 µg/mL. Please optimize the concentration based on your specific assay requirements.

## Immunogen Information

### Gene ID

1364

### Swiss Prot

O14493

### Immunogen

A synthetic peptide corresponding to a sequence within amino acids 100 to the C-terminus of human CLDN4 (NP\_001296.1).

### Synonyms

CPER; CPE-R; CPETR; CPETR1; WBSCR8; hCPE-R; CLDN4

## Contact

☎ | 400-999-6126

✉ | [cn.market@abclonal.com.cn](mailto:cn.market@abclonal.com.cn)

🌐 | [www.abclonal.com.cn](http://www.abclonal.com.cn)

## Product Information

### Source

Rabbit

### Isotype

IgG

### Purification

Affinity purification

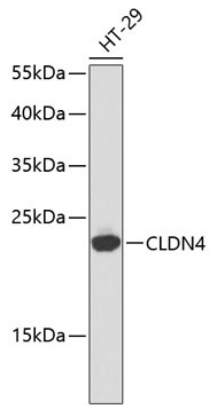
### Storage

Store at -20°C. Avoid freeze / thaw cycles.

Buffer: PBS with 0.01% thimerosal, 50% glycerol, pH7.3.

## Validation Data

---



Western blot analysis of lysates from HT-29 cells, using CLDN4 Rabbit pAb (A2947).  
Secondary antibody: HRP-conjugated Goat anti-Rabbit IgG (H+L) (AS014) at 1:10000 dilution.  
Lysates/proteins: 25µg per lane.  
Blocking buffer: 3% nonfat dry milk in TBST.