

PDX1 Rabbit pAb

Catalog No.: A3070 **2 Publications**

Basic Information

Observed MW

34kDa

Calculated MW

31kDa

Category

Primary antibody

Applications

ELISA, WB

Cross-Reactivity

Mouse

Background

The protein encoded by this gene is a transcriptional activator of several genes, including insulin, somatostatin, glucokinase, islet amyloid polypeptide, and glucose transporter type 2. The encoded nuclear protein is involved in the early development of the pancreas and plays a major role in glucose-dependent regulation of insulin gene expression. Defects in this gene are a cause of pancreatic agenesis, which can lead to early-onset insulin-dependent diabetes mellitus (IDDM), as well as maturity onset diabetes of the young type 4 (MODY4).

Recommended Dilutions

WB 1:500 - 1:1000

Immunogen Information

Gene ID

3651

Swiss Prot

P52945

Immunogen

A synthetic peptide corresponding to a sequence within amino acids 1-100 of human PDX1 (P52945).

Synonyms

GSF; IPF1; IUF1; IDX-1; MODY4; PDX-1; STF-1; PAGEN1; PDX1

Contact

☎ | 400-999-6126

✉ | cn.market@abclonal.com.cn

🌐 | www.abclonal.com.cn

Product Information

Source

Rabbit

Isotype

IgG

Purification

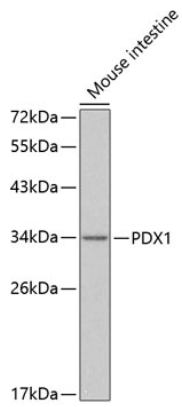
Affinity purification

Storage

Store at -20°C. Avoid freeze / thaw cycles.

Buffer: PBS with 0.01% thimerosal, 50% glycerol, pH7.3.

Validation Data



Western blot analysis of lysates from mouse intestine, using PDX1 Rabbit pAb (A3070) at 1:400 dilution.
Secondary antibody: HRP-conjugated Goat anti-Rabbit IgG (H+L) (AS014) at 1:10000 dilution.
Lysates/proteins: 25 μ g per lane.
Blocking buffer: 3% nonfat dry milk in TBST.