

PIWIL2 Rabbit pAb

Catalog No.: A3073

Basic Information

Observed MW

110kDa

Calculated MW

110kDa

Category

Primary antibody

Applications

ELISA, WB

Cross-Reactivity

Mouse

Background

PIWIL2 belongs to the Argonaute family of proteins, which function in development and maintenance of germline stem cells (Sasaki et al., 2003 [PubMed 12906857]).

Recommended Dilutions

WB 1:500 - 1:1000

Immunogen Information

Gene ID

55124

Swiss Prot

Q8TC59

Immunogen

A synthetic peptide corresponding to a sequence within amino acids 100-200 of human PIWIL2 (Q8TC59).

Synonyms

CT80; HIL1; mili; PIWIL1L; PIWIL2

Contact

☎ | 400-999-6126

✉ | cn.market@abclonal.com.cn

🌐 | www.abclonal.com.cn

Product Information

Source

Rabbit

Isotype

IgG

Purification

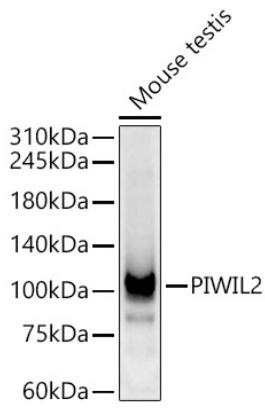
Affinity purification

Storage

Store at -20°C. Avoid freeze / thaw cycles.

Buffer: PBS with 0.02% sodium azide, 50% glycerol, pH7.3.

Validation Data



Western blot analysis of Mouse testis, using PIWIL2 Rabbit pAb (A3073) at 1:500 dilution.
Secondary antibody: HRP Goat Anti-Rabbit IgG (H+L) (AS014) at 1:10000 dilution.
Lysates/proteins: 25ug per lane.
Blocking buffer: 3% nonfat dry milk in TBST.
Detection: ECL Basic Kit (RM00020).
Exposure time: 60s.