

RBMS1 Rabbit pAb

Catalog No.: A3079

Basic Information

Observed MW

50kDa

Calculated MW

45kDa

Category

Primary antibody

Applications

ELISA, WB, IHC-P

Cross-Reactivity

Human

Background

This gene encodes a member of a small family of proteins which bind single stranded DNA/RNA. These proteins are characterized by the presence of two sets of ribonucleoprotein consensus sequence (RNP-CS) that contain conserved motifs, RNP1 and RNP2, originally described in RNA binding proteins, and required for DNA binding. These proteins have been implicated in such diverse functions as DNA replication, gene transcription, cell cycle progression and apoptosis. Several transcript variants, resulting from alternative splicing and encoding different isoforms, have been described. A pseudogene for this locus is found on chromosome 12.

Recommended Dilutions

WB 1:200 - 1:1000

IHC-P 1:20 - 1:100

Immunogen Information

Gene ID

5937

Swiss Prot

P29558

Immunogen

Recombinant fusion protein containing a sequence corresponding to amino acids 1-260 of human RBMS1 (NP_002888.1).

Synonyms

YC1; MSSP; SCR2; HCC-4; MSSP-1; MSSP-2; MSSP-3; C2orf12; RBMS1

Contact

☎ | 400-999-6126

✉ | cn.market@abclonal.com.cn

🌐 | www.abclonal.com.cn

Product Information

Source

Rabbit

Isotype

IgG

Purification

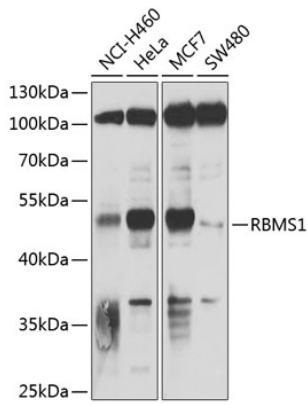
Affinity purification

Storage

Store at -20°C. Avoid freeze / thaw cycles.

Buffer: PBS with 0.02% sodium azide, 50% glycerol, pH7.3.

Validation Data



Western blot analysis of extracts of various cell lines, using RBMS1 antibody (A3079) at 1:1000 dilution.
Secondary antibody: HRP Goat Anti-Rabbit IgG (H+L) (AS014) at 1:10000 dilution.
Lysates/proteins: 25µg per lane.
Blocking buffer: 3% nonfat dry milk in TBST.
Detection: ECL Basic Kit (RM00020).
Exposure time: 30s.