

# SPAG6 Rabbit pAb

Catalog No.: A3088

## Basic Information

### Observed MW

55kDa

### Calculated MW

55kDa

### Category

Primary antibody

### Applications

WB,ELISA

### Cross-Reactivity

Human

## Background

The correlation of anti-sperm antibodies with cases of unexplained infertility implicates a role for these antibodies in blocking fertilization. Improved diagnosis and treatment of immunologic infertility, as well as identification of proteins for targeted contraception, are dependent on the identification and characterization of relevant sperm antigens. The protein expressed by this gene is recognized by anti-sperm antibodies from an infertile man. This protein localizes to the tail of permeabilized human sperm and contains eight contiguous armadillo repeats, a motif known to mediate protein-protein interactions. Studies in mice suggest that this protein is involved in sperm flagellar motility and maintenance of the structural integrity of mature sperm. Several transcript variants encoding different isoforms have been found for this gene.

## Recommended Dilutions

**WB** 1:500 - 1:1000

**ELISA** Recommended starting concentration is 1 µg/mL. Please optimize the concentration based on your specific assay requirements.

## Immunogen Information

### Gene ID

9576

### Swiss Prot

O75602

### Immunogen

Recombinant protein (or fragment). This information is considered to be commercially sensitive.

### Synonyms

pf16; CT141; FAP194; CFAP194; Repro-SA-1; SPAG6

## Contact

☎ | 400-999-6126

✉ | [cn.market@abclonal.com.cn](mailto:cn.market@abclonal.com.cn)

🌐 | [www.abclonal.com.cn](http://www.abclonal.com.cn)

## Product Information

### Source

Rabbit

### Isotype

IgG

### Purification

Affinity purification

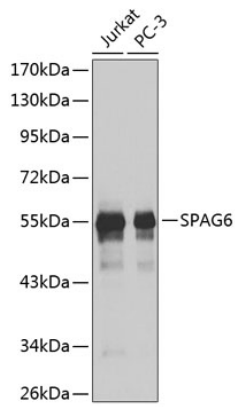
### Storage

Store at -20°C. Avoid freeze / thaw cycles.

Buffer: PBS with 0.01% thimerosal, 50% glycerol, pH7.3.

## Validation Data

---



Western blot analysis of various lysates using SPAG6 Rabbit pAb (A3088).  
Secondary antibody: HRP-conjugated Goat anti-Rabbit IgG (H+L) (AS014) at 1:10000 dilution.  
Lysates/proteins: 25µg per lane.  
Blocking buffer: 3% nonfat dry milk in TBST.