

NEUROG1 Rabbit pAb

Catalog No.: A3110

Basic Information

Observed MW

25kDa

Calculated MW

26kDa

Category

Primary antibody

Applications

WB, ELISA

Cross-Reactivity

Human, Mouse

Background

Enables E-box binding activity and protein homodimerization activity. Involved in several processes, including animal organ morphogenesis; cranial nerve development; and hard palate morphogenesis. Predicted to be located in neuronal cell body. Predicted to be part of chromatin. Predicted to be active in nucleus.

Recommended Dilutions

WB 1:500 - 1:1000

ELISA Recommended starting concentration is 1 µg/mL. Please optimize the concentration based on your specific assay requirements.

Immunogen Information

Gene ID

4762

Swiss Prot

Q92886

Immunogen

Recombinant protein (or fragment). This information is considered to be commercially sensitive.

Synonyms

AKA; ngn1; Math4C; bHLHa6; NEUROD3; NEUROG1

Contact

 | 400-999-6126

 | cn.market@abclonal.com.cn

 | www.abclonal.com.cn

Product Information

Source

Rabbit

Isotype

IgG

Purification

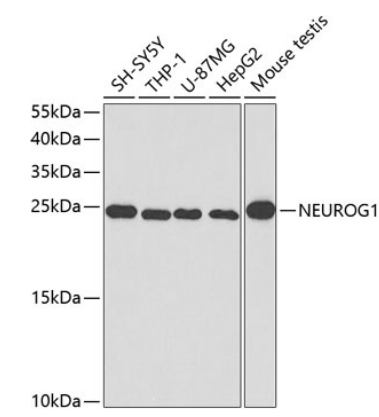
Affinity purification

Storage

Store at -20°C. Avoid freeze / thaw cycles.

Buffer: PBS with 0.01% thimerosal, 50% glycerol, pH7.3.

Validation Data



Western blot analysis of various lysates using NEUROG1 Rabbit pAb (A3110) at 1:400 dilution. Secondary antibody: HRP-conjugated Goat anti-Rabbit IgG (H+L) (AS014) at 1:10000 dilution. Lysates/proteins: 25µg per lane. Blocking buffer: 3% nonfat dry milk in TBST.