

# OPRL1 Rabbit pAb

**Catalog No.: A3113**

## Basic Information

### Observed MW

50kDa

### Calculated MW

41kDa

### Category

Primary antibody

### Applications

ELISA,WB

### Cross-Reactivity

Human

## Background

The protein encoded by this gene is a member of the 7 transmembrane-spanning G protein-coupled receptor family, and functions as a receptor for the endogenous, opioid-related neuropeptide, nociceptin/orphanin FQ. This receptor-ligand system modulates a variety of biological functions and neurobehavior, including stress responses and anxiety behavior, learning and memory, locomotor activity, and inflammatory and immune responses. A promoter region between this gene and the 5'-adjacent RGS19 (regulator of G-protein signaling 19) gene on the opposite strand functions bi-directionally as a core-promoter for both genes, suggesting co-operative transcriptional regulation of these two functionally related genes. Alternatively spliced transcript variants have been described for this gene. A recent study provided evidence for translational readthrough in this gene, and expression of an additional C-terminally extended isoform via the use of an alternative in-frame translation termination codon.

## Recommended Dilutions

**WB** 1:500 - 1:2000

## Immunogen Information

### Gene ID

4987

### Swiss Prot

P41146

### Immunogen

A synthetic peptide corresponding to a sequence within amino acids 270-370 of human OPRL1 (NP\_000904.1)

### Synonyms

NOP; OOR; KOR3; NOPr; OPRL; ORL1; KOR-3; NOCIR; PNOCR; OPRL1

## Contact

☎ | 400-999-6126

✉ | [cn.market@abclonal.com.cn](mailto:cn.market@abclonal.com.cn)

🌐 | [www.abclonal.com.cn](http://www.abclonal.com.cn)

## Product Information

### Source

Rabbit

### Isotype

IgG

### Purification

Affinity purification

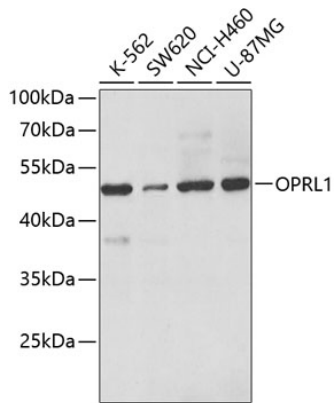
### Storage

Store at -20°C. Avoid freeze / thaw cycles.

Buffer: PBS with 0.02% sodium azide,50% glycerol,pH7.3.

## Validation Data

---



Western blot analysis of extracts of various cell lines, using OPRL1 antibody (A3113) at 1:500 dilution.  
Secondary antibody: HRP Goat Anti-Rabbit IgG (H+L) (AS014) at 1:10000 dilution.  
Lysates/proteins: 25µg per lane.  
Blocking buffer: 3% nonfat dry milk in TBST.  
Detection: ECL Enhanced Kit (RM00021).